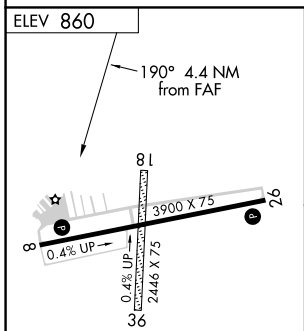
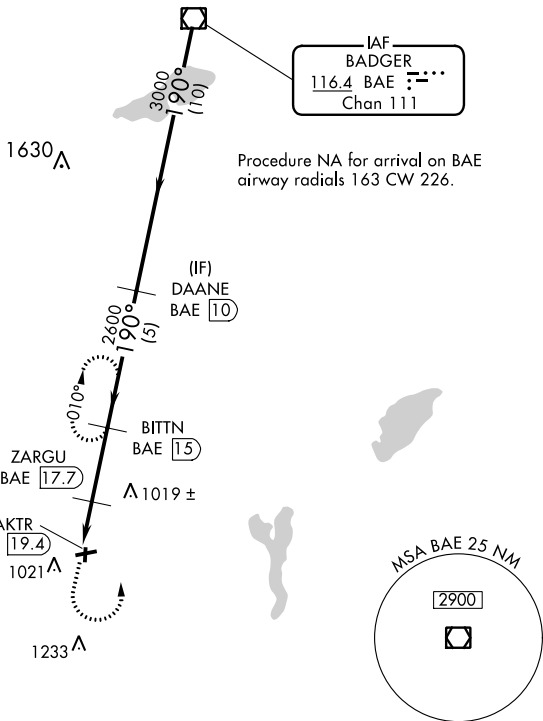


VOR/DME BAE <b>116.4</b> Chan <b>111</b>	APP CRS <b>190°</b>	Rwy Idg TDZE Apt Elev	<b>N/A</b> <b>N/A</b> <b>860</b>
--	------------------------	-----------------------------	--

**VOR/DME-A**  
EAST TROY MUNI (57C)

<p>◀ Circling NA to Rwys 18 and 36.</p>	<p>MISSED APPROACH: Climb to 2700 then left turn on BAE VOR/DME R-190 to BITTN/15 DME and hold.</p>
---	---

AWOS-3PT <b>118,125</b>	MILWAUKEE APP CON <b>125.35 307.0</b>	GCO <b>121.725</b>	UNICOM <b>123.0</b> (CTAF) <b>0</b>
----------------------------	--	-----------------------	--



2700	BAE R-190	BITTN BAE 15	DAANE BAE 10	BAE VOR/DME
	ZARGU BAE 17.7	BITTN BAE 15	3000	3000
	MAKTR BAE 19.4	2600	190°	
	1800	2600	3000	
	1.7 NM	2.7 NM	5 NM	10 NM
CATEGORY	A	B	C	D
CIRCLING	1340-1	480 (500-1)	NA	

MIRL Rwy 8-26 **0**  
REIL Rws 8 and 26 **0**

EC-3, 25 MAR 2021 to 22 APR 2021

EC-3, 25 MAR 2021 to 22 APR 2021