


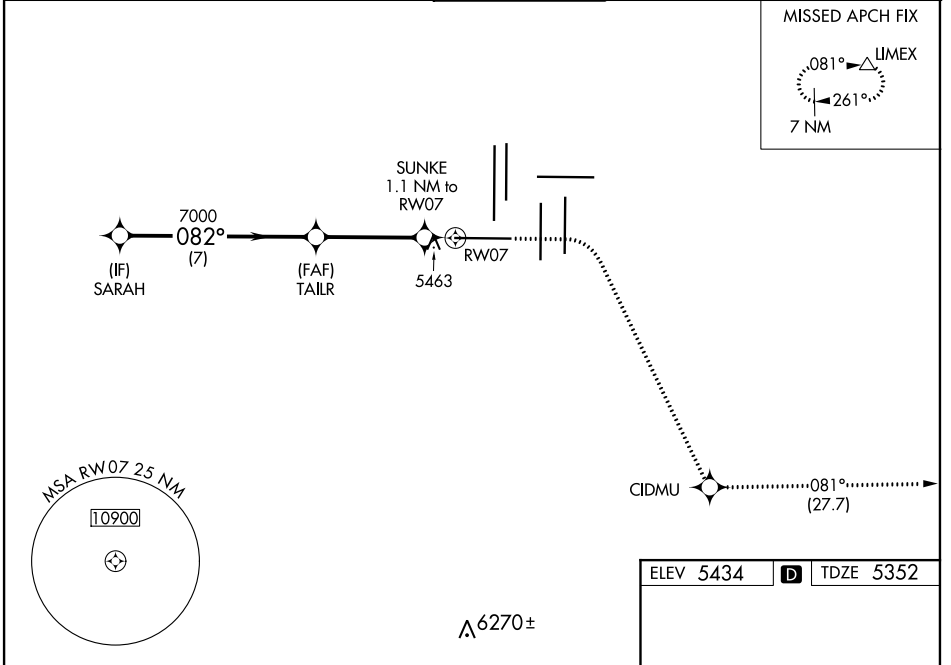
WAAS CH 87128 W07A	APP CRS 082°	Rwy Idg 12000 TDZE 5352 Apt Elev 5434
--	------------------------	--

RNAV (GPS) Y RWY 7

DENVER INTL (DEN)

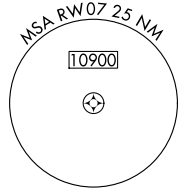
RNP APCH. RADAR required.	MALSR		MISSED APPROACH: Climb to 5900 then climbing right turn to 10000 direct CIDMU and on track 081° to LIMEX and hold.
▼ For uncompensated Baro-VNAV systems, LNAV/VNAV NA below -25°C or above 46°C. Simultaneous approach authorized with Rwy 8. LNAV procedure NA during simultaneous operations. Use of FD or AP providing RNAV track guidance required during simultaneous operations. For inop ALS, increase LNAV/VNAV all Cats visibility to RVR 4500 and LNAV Cat C/D visibility to RVR 5500.			

D-ATIS ARR 125.6 379.9 DEP 134.025	DENVER APP CON 119.3 307.3 (NORTH) 120.35 379.3 (SOUTH)	DENVER TOWER 128.75 273.55	GND CON 127.5 379.175	CLNC DEL 118.75	CPDLC
--	---	--------------------------------------	---------------------------------	---------------------------	-------

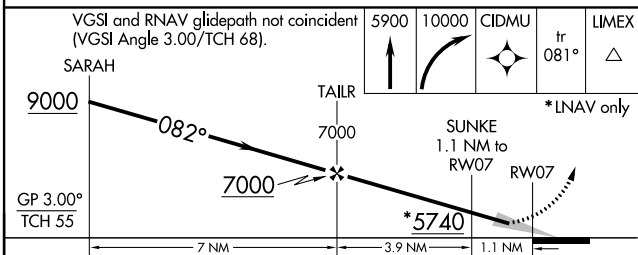


SW-1, 25 MAR 2021 to 22 APR 2021

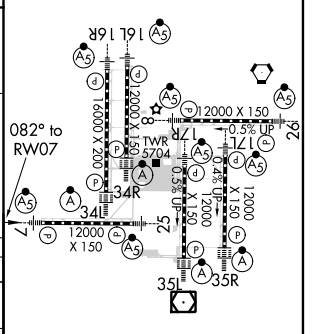
SW-1, 25 MAR 2021 to 22 APR 2021



ELEV 5434	D	TDZE 5352
-----------	----------	-----------



GP 3.00° TCH 55	7 NM				3.9 NM		1.1 NM	
CATEGORY	A	B	C	D				
LPV DA	5552/18		200 (200-½)					
LNAV/VNAV DA	5626/24		274 (200-½)					
LNAV MDA	5720/24 368 (300-½)		5720/26 368 (300-½)					



HIRL all Rwys
TDZ/CL Rwys 7, 16L, 16R, 17R, 26, 34L, 34R, 35L, 35R