

WAAS CH <b>90318</b> <b>W34B</b>	APP CRS <b>353°</b>	Rwy Idg <b>12000</b> TDZE <b>5354</b> Apt Elev <b>5434</b>
--	------------------------	--

# RNAV (GPS) Y RWY 34R

DENVER INTL (DEN)

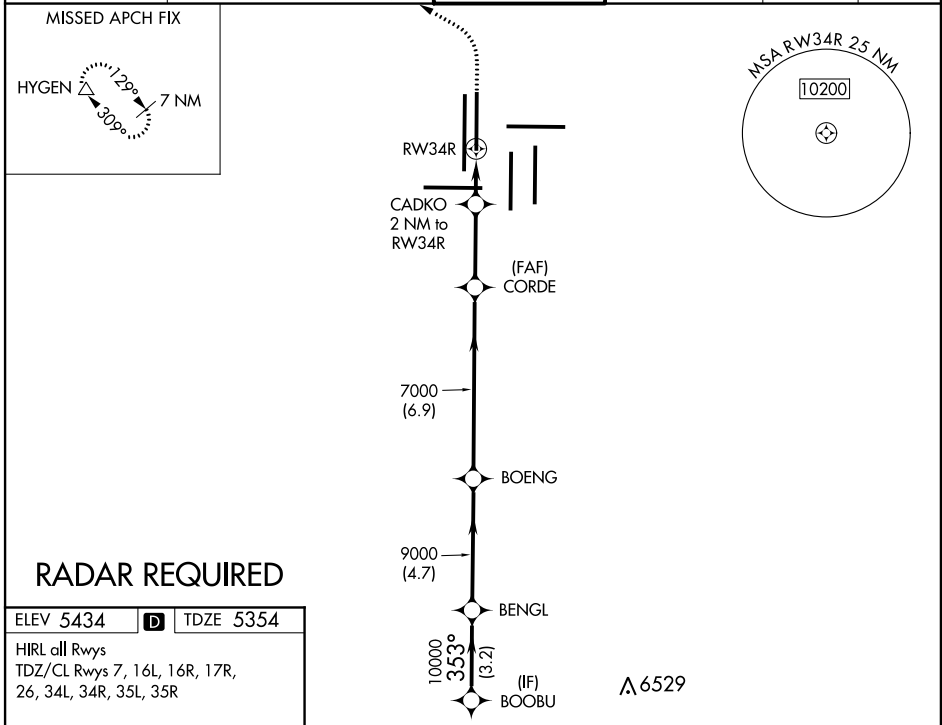
**⚠** For uncompensated Baro-VNAV systems, LNAV/VNAV NA below -25°C (-13°F) or above 46°C (114°F). DME/DME RNP-0.3 NA. LNAV procedure NA during simultaneous operations. Simultaneous approach authorized with Rwy 35L/R. Use of FD or AP providing RNAV track guidance required during simultaneous operations.

ALSF-2



**MISSED APPROACH:** Climb to 6000 then climbing left turn to 10000 direct HYGEM and hold.

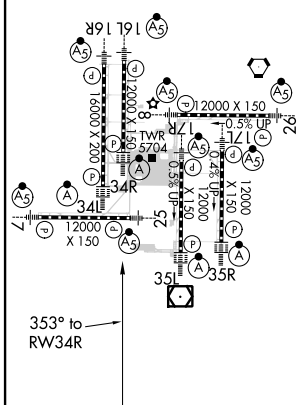
D-ATIS ARR <b>125.6 379.9</b> DEP <b>134.025</b>	DENVER APP CON <b>119.3 307.3</b> (NORTH) <b>120.35 379.3</b> (SOUTH)	DENVER TOWER <b>135.3 351.95</b>	GND CON <b>127.5 379.175</b>	CLNC DEL <b>118.75</b>	CPDLC
--	---	-------------------------------------	---------------------------------	---------------------------	-------



## RADAR REQUIRED

ELEV 5434	<b>D</b>	TDZE 5354
-----------	----------	-----------

HIRL all Rwy's  
TDZ/CL Rwy's 7, 16L, 16R, 17R,  
26, 34L, 34R, 35L, 35R



VGSi and RNAV glidepath not coincident (VGSi Angle 3.00/TCH 63).		6000	10000	HYGEM
		↑	↙	$\Delta$
		*LNAV only		
BOOBU	BENGL	BOENG	CORDE	CADKO 2 NM to RWY 34R
10000	353°	10000	9000	353°
7000	7000	*6040		
GP 3.00° TCH 59				
3.2 NM	4.7 NM	6.9 NM	3 NM	2 NM
CATEGORY	A	B	C	D
LPV DA		5554/18	200 (200-½)	
LNAV/VNAV DA		5838/60	484 (500-1¼)	
LNAV MDA	5940/24	586 (600-½)	5940-1¼	586 (600-1¼)

SW-1, 25 MAR 2021 to 22 APR 2021

SW-1, 25 MAR 2021 to 22 APR 2021