


|  |                        |  |
|--|------------------------|--|
| WAAS<br>CH <b>99307</b><br><b>W16A</b> | APP CRS<br><b>173°</b> | Rwy Idg <b>12000</b><br>TDZE <b>5357</b><br>Apt Elev <b>5434</b> |
|--|------------------------|--|

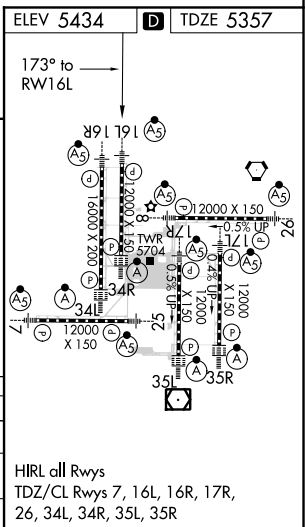
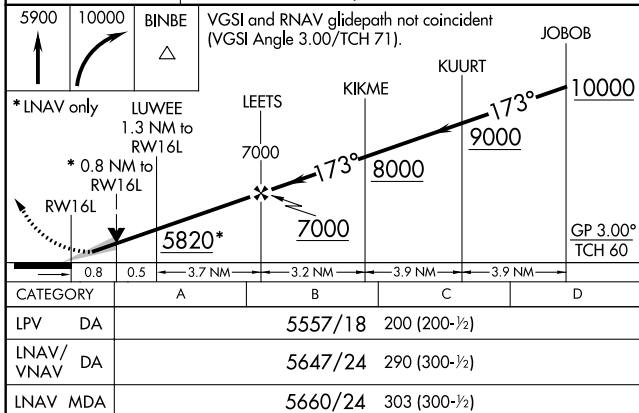
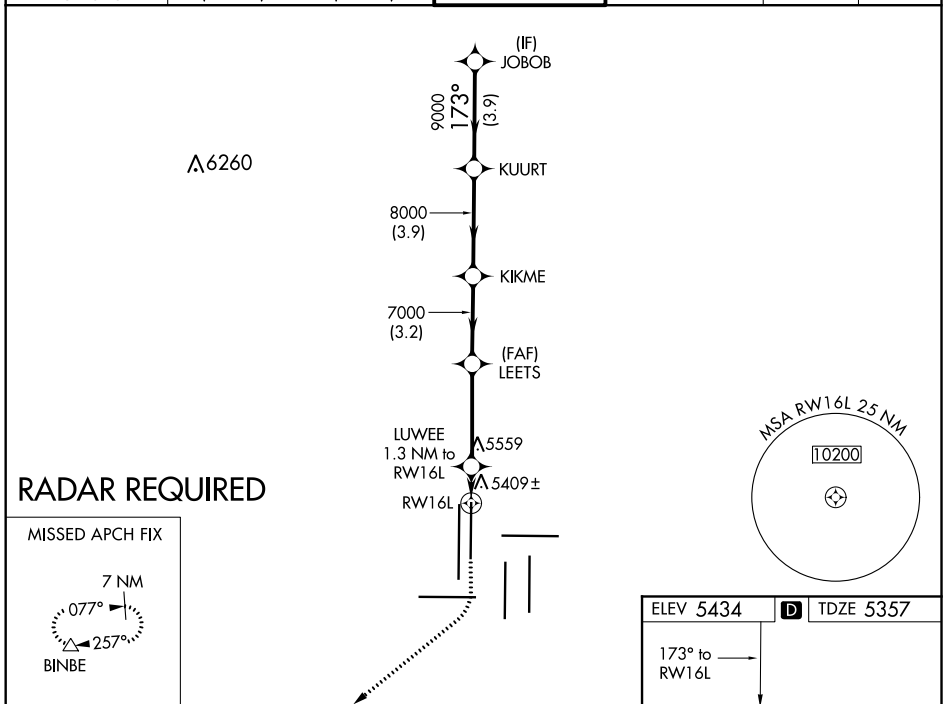
# RNAV (GPS) Y RWY 16L

DENVER INTL (DEN)

**▽** For uncompensated Baro-VNAV systems, LNAV/VNAV NA below -25°C (-13°F) or above 45°C (114°F). Simultaneous approach authorized with Rwy 17 L/R. DME/DME RNP -0.3 NA. LNAV procedure NA during simultaneous operations. For inoperative MALSR, increase LNAV/VNAV all Cats, and LNAV Cats C/D visibility to RVR 4500. Use of FD or AP providing RNAV track guidance required during simultaneous operations.

**MALSR**  
  
**MISSED APPROACH:** Climb to 5900 then climbing right turn to 10000 direct BINBE and hold, continue climb-in-hold to 10000.

|  |  |                                     |                                 |                           |       |
|--|--|-------------------------------------|---------------------------------|---------------------------|-------|
| D-ATIS<br>ARR <b>125.6 379.9</b><br>DEP <b>134.025</b> | DENVER APP CON<br><b>119.3 307.3 120.35 379.3</b><br>(NORTH) (SOUTH) | DENVER TOWER<br><b>135.3 351.95</b> | GND CON<br><b>127.5 379.175</b> | CLNC DEL<br><b>118.75</b> | CPDLC |
|--|--|-------------------------------------|---------------------------------|---------------------------|-------|



HIRL all Rwys  
TDZ/CL Rwys 7, 16L, 16R, 17R,  
26, 34L, 34R, 35L, 35R

SW-1, 25 MAR 2021 to 22 APR 2021

SW-1, 25 MAR 2021 to 22 APR 2021