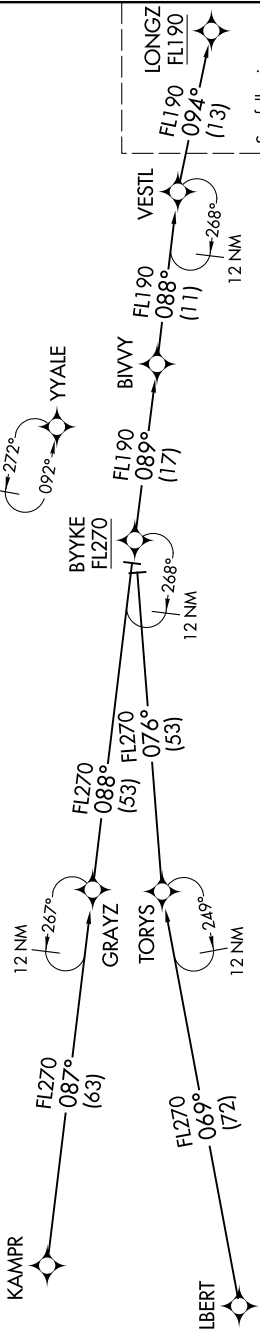


# LONGZ ONE ARRIVAL (RNAV) Transition Routes

SW-1, 25 MAR 2021 to 22 APR 2021

DENVER APP CON  
 119.3 307.3  
 D-ATIS ARR  
 125.6 379.9  
 DENVER TOWER  
 128.75 273.55 (Rwy 7-25)  
 132.35 239.275 (Rwys 8-26, 17L-35R)  
 133.3 322.45 (Rwy 17R-35L)  
 135.3 351.95 (Rwys 16L-34R, 16R-34L)



NOTE: RADAR required.  
 NOTE: RNAV 1.  
 NOTE: DME/DME/IRU or GPS required.  
 NOTE: Turbojet aircraft only.  
 NOTE: Expect runway assignment on initial contact with Denver TRACON.  
 NOTE: BYYKE enroute transition is ATC assigned only.

BYYKE TRANSITION (BYYKE.LONGZ1)  
KAMPR TRANSITION (KAMPR.LONGZ1)  
LBERT TRANSITION (LBERT.LONGZ1)

(CONTINUED ON FOLLOWING PAGE)

NOTE: Chart not to scale.

SW-1, 25 MAR 2021 to 22 APR 2021