

LOC/DME I-DXU <b>111.9</b> Chan 56	APP CRS <b>353°</b>	Rwy Idg TDZE Apt Elev <b>16000</b> <b>5327</b> <b>5434</b>
--	------------------------	---

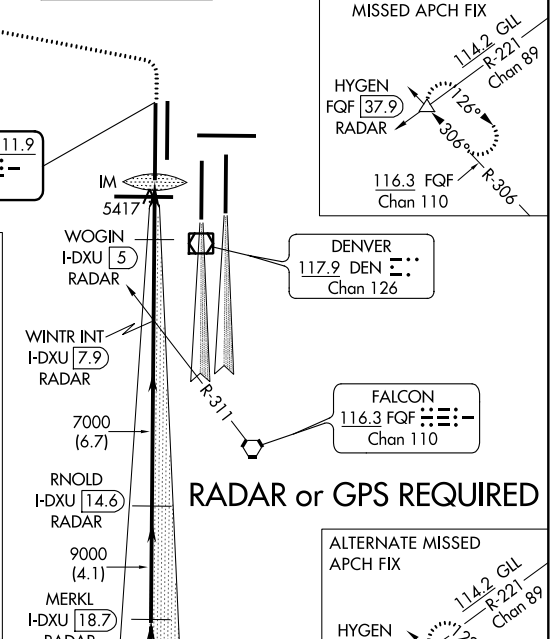
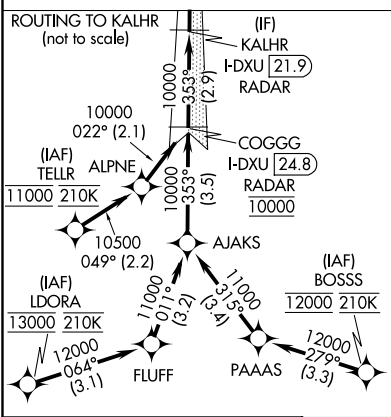
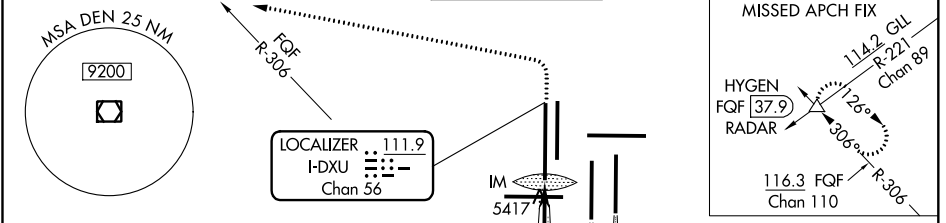
# ILS or LOC RWY 34L

DENVER INTL (DEN)

**▼** RADAR or DME required. Simultaneous approach authorized with Rwy 35L/R. For inoperative ALSF, increase S-LOC Cats C/D visibility to RVR 5500.

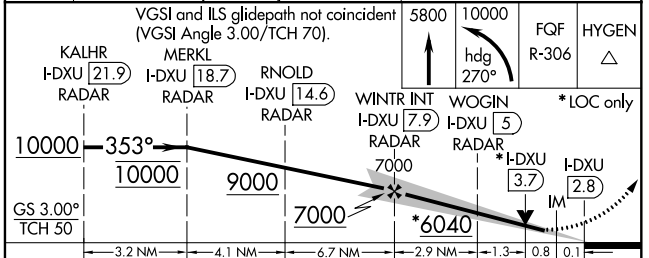
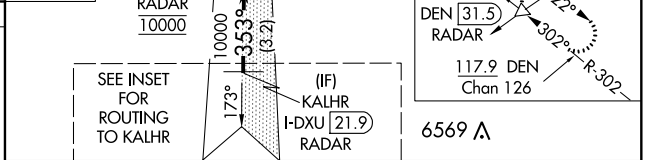
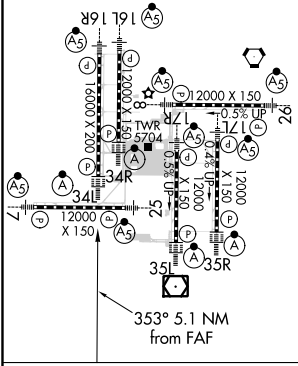
ALSF-2 MISSED APPROACH: Climb to 5800 then climbing left turn to 10000 on heading 270° and on FGF VORTAC R-306 to HYGEN/FQG 37.9 DME/RADAR and hold.

D-ATIS ARR <b>125.6 379.9</b> DEP <b>134.025</b>	DENVER APP CON <b>119.3 307.3</b> (NORTH) <b>120.35 379.3</b> (SOUTH)	DENVER TOWER <b>135.3 351.95</b>	GND CON <b>127.5 379.175</b>	CLNC DEL <b>118.75</b>	CPDLC
--	---	-------------------------------------	---------------------------------	---------------------------	-------



ELEV 5434	<b>D</b>	TDZE 5327
-----------	----------	-----------

HIRL all Rwy's  
TDZ/Cl Rwy's 7, 16L, 16R, 17R, 26, 34L, 34R, 35L, 35R



CATEGORY	A	B	C	D
S-ILS 34L	5527/18 200 (100-½)			
S-LOC 34L	5680/24 353 (300-½)	5680/30 353 (300-¾)		

SW-1, 25 MAR 2021 to 22 APR 2021

SW-1, 25 MAR 2021 to 22 APR 2021