

LOC/DME I-DQIQ 111.9 Chan 56	APP CRS 173°	Rwy Idg 16000 TDZE 5326 Apt Elev 5434
--	------------------------	--

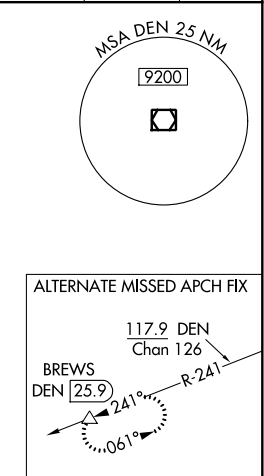
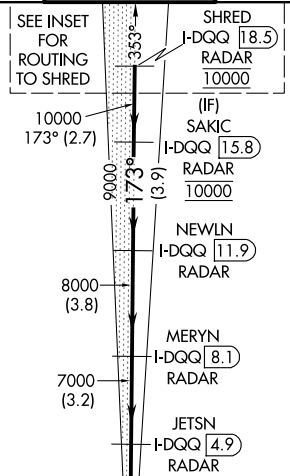
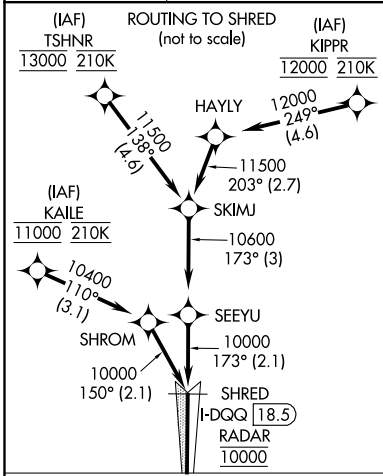
ILS or LOC RWY 16R

DENVER INTL (DEN)

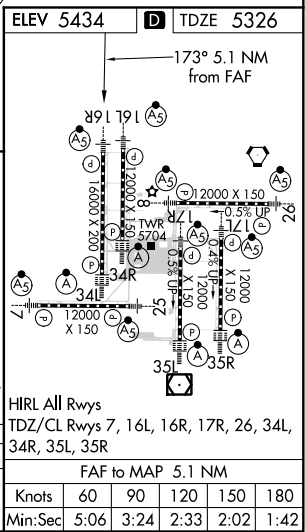
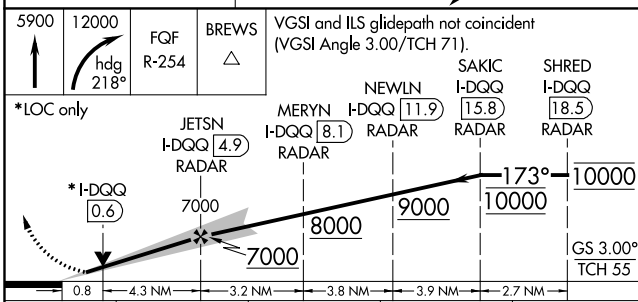
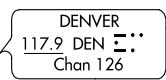
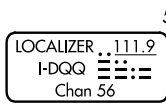
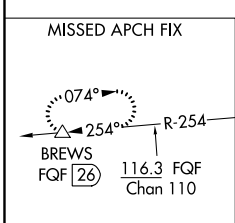
▼ For inoperative MALS/R, increase S-LOC Cat C/D visibility to RVR 4500. Simultaneous approach authorized with Rwy 17L and 17R. DME required.

MALS/R MISSED APPROACH: Climb to 5900 then climbing right turn to 12000 on heading 218° and on FGF VORTAC R-254 to BREWS/FQF 26 DME and hold.

D-ATIS ARR 125.6 379.9 DEP 134.025	DENVER APP CON 119.3 307.3 (NORTH) 120.35 379.3 (SOUTH)	DENVER TOWER 135.3 351.95	GND CON 127.5 379.175	CLNC DEL 118.75	CPDLC
--	---	-------------------------------------	---------------------------------	---------------------------	-------



RADAR or GPS REQUIRED



CATEGORY	A	B	C	D
S-ILS 16R	5526/18 200 (100-½)			
S-LOC 16R	5640/24 314 (300-½)			

SW-1, 25 MAR 2021 to 22 APR 2021

SW-1, 25 MAR 2021 to 22 APR 2021