

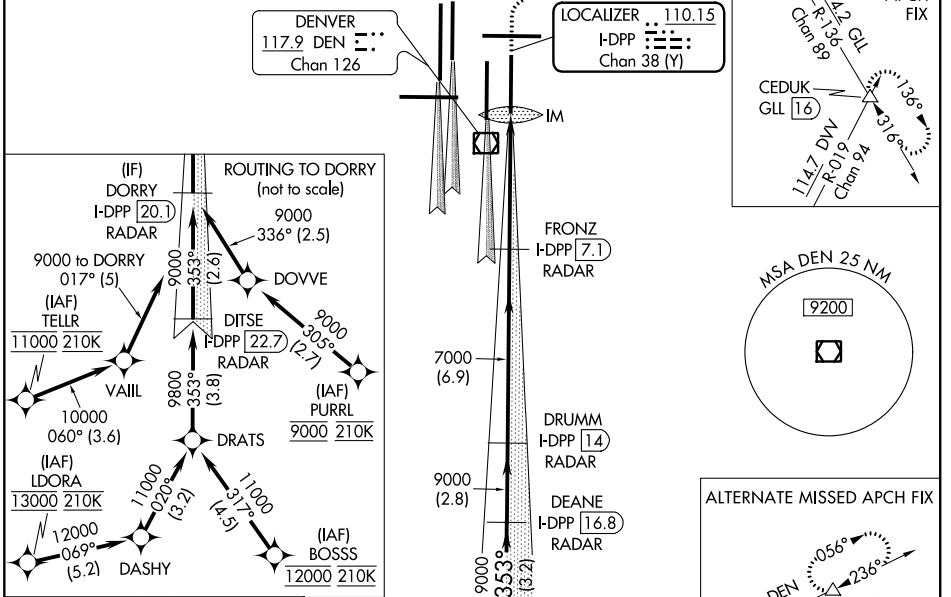
LOC/DME I-DPP <b>110.15</b> Chan <b>38(Y)</b>	APP CRS <b>353°</b>	Rwy Idg <b>12000</b> TDZE <b>5370</b> Apt Elev <b>5434</b>
---	------------------------	--

# ILS RWY 35R (CAT II & III)

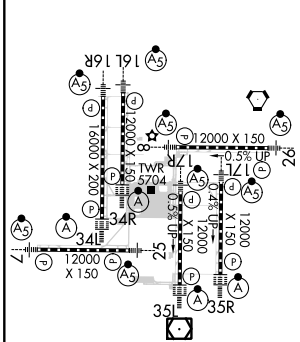
DENVER INTL (DEN)

<p>Simultaneous approach authorized with Rwy 34L, Rwy 34R, and Rwy 35L. CAT II: RVR 1000 authorized with specific OPSPEC, MSPEC, or LOA approval and use of autoland or HUD to touchdown.</p>	<p>ALSf-2</p>	<p>MISSED APPROACH: Climb to 5800 then climbing right turn to 10000 on heading 048° and on GLL VORTAC R-136 to CEDUK/GLL 16 DME and hold.</p>			
<p>D-ATIS ARR <b>125.6 379.9</b> DEP <b>134.025</b></p>	<p>DENVER APP CON <b>119.3 307.3 120.35 379.3</b> (NORTH) (SOUTH)</p>	<p>DENVER TOWER <b>132.35 239.275</b></p>	<p>GND CON <b>121.85 377.1</b></p>	<p>CLNC DEL <b>118.75</b></p>	<p>CPDLC</p>

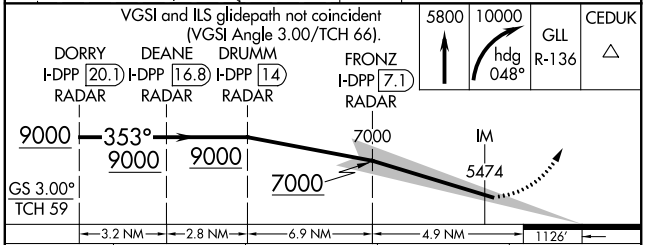
## RADAR or GPS REQUIRED



ELEV 5434	<b>D</b>	TDZE 5370
-----------	----------	-----------



SEE INSET FOR ROUTING TO DORRY	(IF) DORRY I-DPP [20.1] RADAR	6569	WITNE DEN [25.6]
--------------------------------	-------------------------------	------	------------------



5800	10000	GLL R-136	CEDUK
<p>DORRY I-DPP [20.1] RADAR    DEANE I-DPP [16.8] RADAR    DRUMM I-DPP [14] RADAR    FRONZ I-DPP [7.1] RADAR</p>			
9000	7000	5474	
GS 3.00°	TCH 59		
CATEGORY	A	B	C
S-ILS 35R	CAT II RA 111/12 100 DA 5470		
S-ILS 35R	CAT IIIa RVR 07		
S-ILS 35R	CAT IIIb RVR 03		
S-ILS 35R	CAT IIIc NA		

## CATEGORY II & III ILS - SPECIAL AIRCREW & AIRCRAFT CERTIFICATION REQUIRED

SW-1, 25 MAR 2021 to 22 APR 2021

SW-1, 25 MAR 2021 to 22 APR 2021