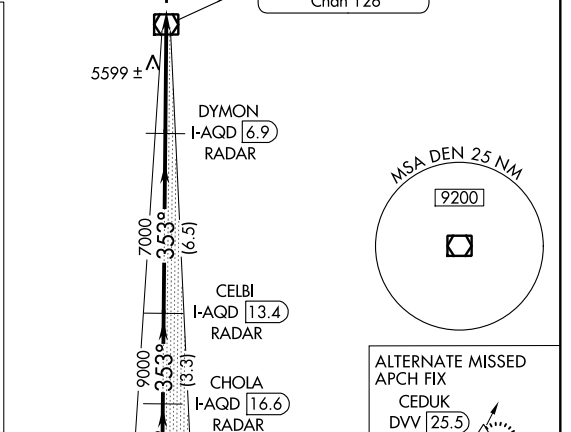
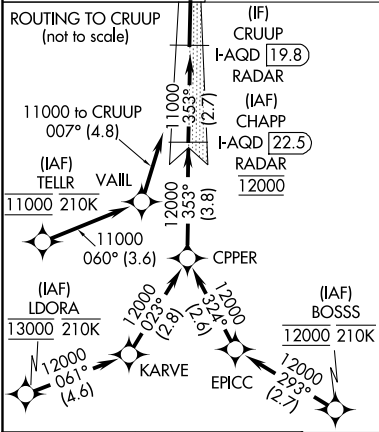
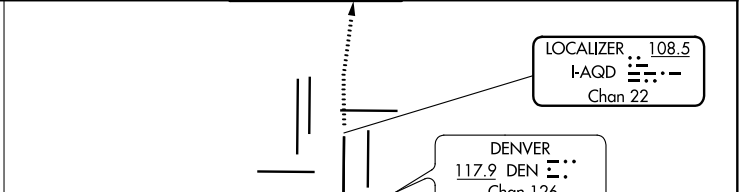
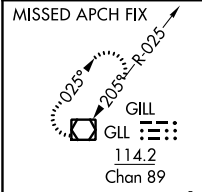


LOC/DME I-AQD 108.5 Chan 22	APP CRS 353°	Rwy Idg 12000 TDZE 5434 Apt Elev 5434
---	------------------------	--

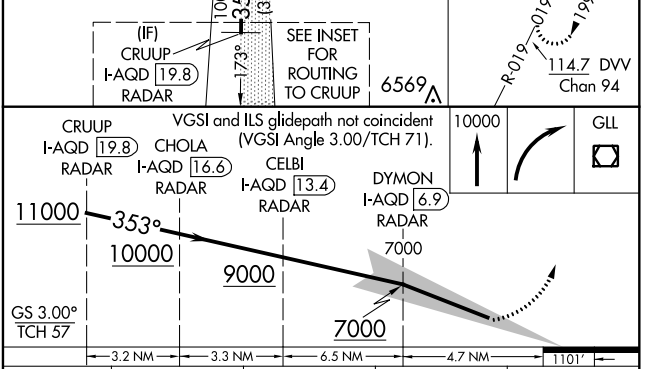
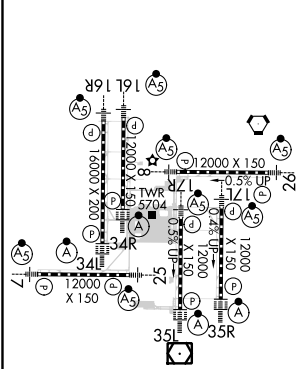
ILS RWY 35L (SA CAT I)

DENVER INTL (DEN)

RNAV 1-GPS or RADAR required for procedure entry.		ALSIF-2 	MISSED APPROACH: Climb to 10000 then right turn direct GLL VOR/DME and hold.			
Simultaneous approach authorized. Requires specific OPSPEC, MSPEC, or LOA approval and use of HUD to DH.						
D-ATIS ARR 125.6 379.9 DEP 134.025	DENVER APP CON 119.3 307.3 (NORTH)	120.35 379.3 (SOUTH)	DENVER TOWER 133.3 322.45	GND CON 121.85 377.1	CLNC DEL 118.75	CPDLC



ELEV 5434	D	TDZE 5434
-----------	----------	-----------



CRUUP I-AQD 19.8	CHOLA I-AQD 16.6	CELBI I-AQD 13.4	DYMON I-AQD 6.9
VGS1 and ILS glidepath not coincident (VGS1 Angle 3.00/TCH 71).			
11000	9000	7000	10000
GS 3.00° TCH 57			
3.2 NM	3.3 NM	6.5 NM	4.7 NM
CATEGORY	A	B	C
S-ILS 35L	RA 165/14 150 DA 5584		

SA CATEGORY I ILS - SPECIAL AIRCREW & AIRCRAFT CERTIFICATION REQUIRED

SW-1, 25 MAR 2021 to 22 APR 2021

SW-1, 25 MAR 2021 to 22 APR 2021