

LOC/DME I-DXU <b>111.9</b> Chan <b>56</b>	APP CRS <b>353°</b>	Rwy Idg TDZE Apt Elev <b>16000</b> <b>5327</b> <b>5434</b>
---	------------------------	---

# ILS RWY 34L (CAT II & III)

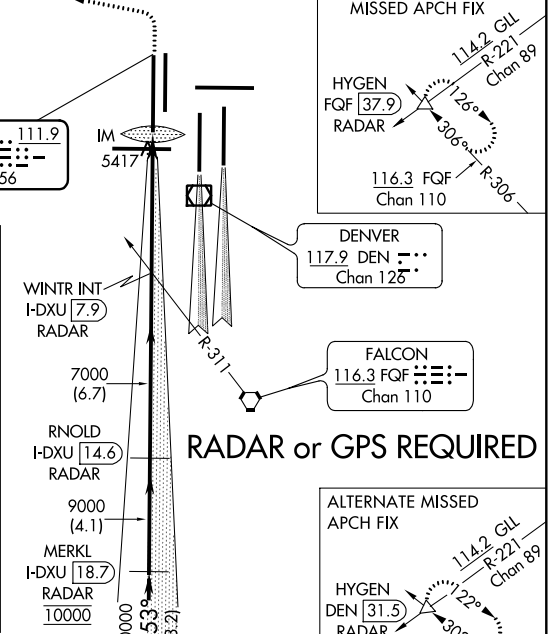
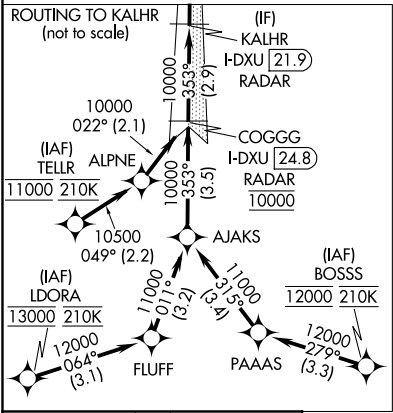
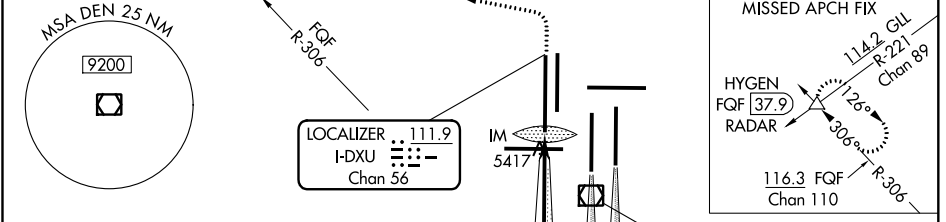
DENVER INTL (DEN)

▼ RADAR or DME required. Simultaneous approach authorized with Rwy 35L/R. CAT II: RVR 1000 authorized with specific OPSPEC, MSPEC, or LOA approval and use of autoland or HUD to touchdown.

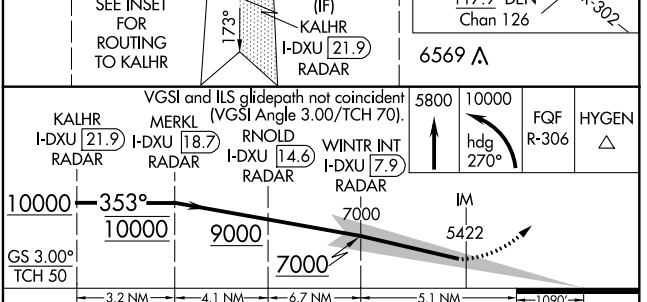
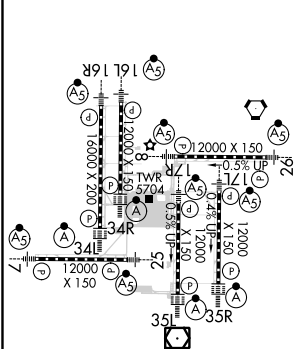
ALSF-2

MISSED APPROACH: Climb to 5800 then climbing left turn to 10000 on heading 270° and on FQG VORTAC R-306 to HYGEN/FQG 37.9 DME/RADAR and hold.

D-ATIS ARR <b>125.6 379.9</b> DEP <b>134.025</b>	DENVER APP CON <b>119.3 307.3 120.35 379.3</b> (NORTH) (SOUTH)	DENVER TOWER <b>135.3 351.95</b>	GND CON <b>127.5 379.175</b>	CLNC DEL <b>118.75</b>	CPDLC
--	--	-------------------------------------	---------------------------------	---------------------------	-------



ELEV 5434	<b>D</b>	TDZE 5327
-----------	----------	-----------



CATEGORY	A	B	C	D
S-ILS 34L	CAT II RA 108/12 100 DA 5427			
S-ILS 34L	CAT IIIa RVR 07			
S-ILS 34L	CAT IIIb RVR 03			
S-ILS 34L	CAT IIIc NA			

## CATEGORY II & III ILS - SPECIAL AIRCREW & AIRCRAFT CERTIFICATION REQUIRED

SW-1, 25 MAR 2021 to 22 APR 2021

SW-1, 25 MAR 2021 to 22 APR 2021