

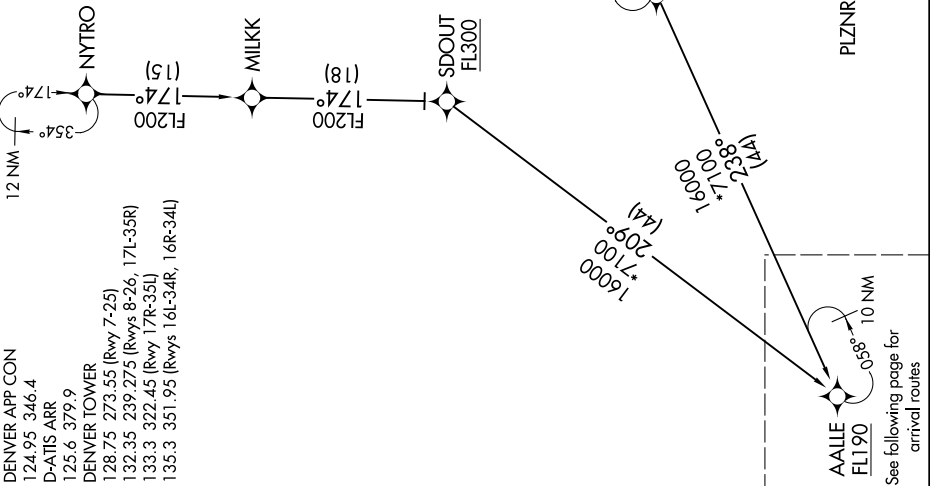
AALLE TWO ARRIVAL (RNAV) Transition Routes

SW-1, 25 MAR 2021 to 22 APR 2021

- DENVER APP CON
124.95 346.4
- D-ATIS ARR
125.6 379.9
- DENVER TOWER
128.75 273.55 (Rwy 7-25)
- 132.35 239.275 (Rwys 8-26, 17L-35R)
- 133.3 322.45 (Rwy 17R-35L)
- 135.3 351.95 (Rwys 16L-34R, 16R-34I)

NYTRO TRANSITION (NYTRO.AALLE2)
PORDR TRANSITION (PORDR.AALLE2)

- NOTE: RADAR required.
- NOTE: RNAV 1.
- NOTE: DME/DME/IRU or GPS required.
- NOTE: Turbojet aircraft only.
- NOTE: Expect runway assignment on initial contact with Denver TRACON.



NOTE: Chart not to scale.

(CONTINUED ON FOLLOWING PAGE)

SW-1, 25 MAR 2021 to 22 APR 2021

AALLE TWO ARRIVAL (RNAV) Transition Routes