

WAAS CH 93924 W36A	APP CRS 005°	Rwy Ldg 3499 TDZE 246 Apt Elev 247
--	------------------------	---

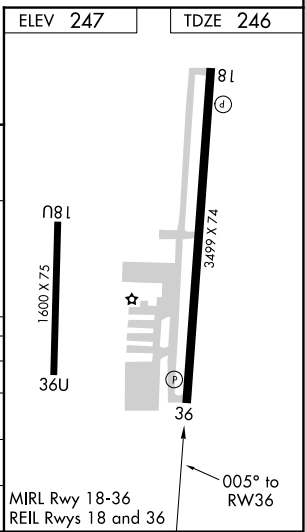
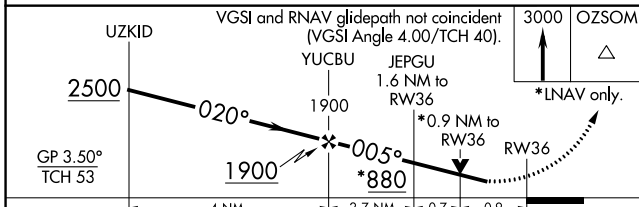
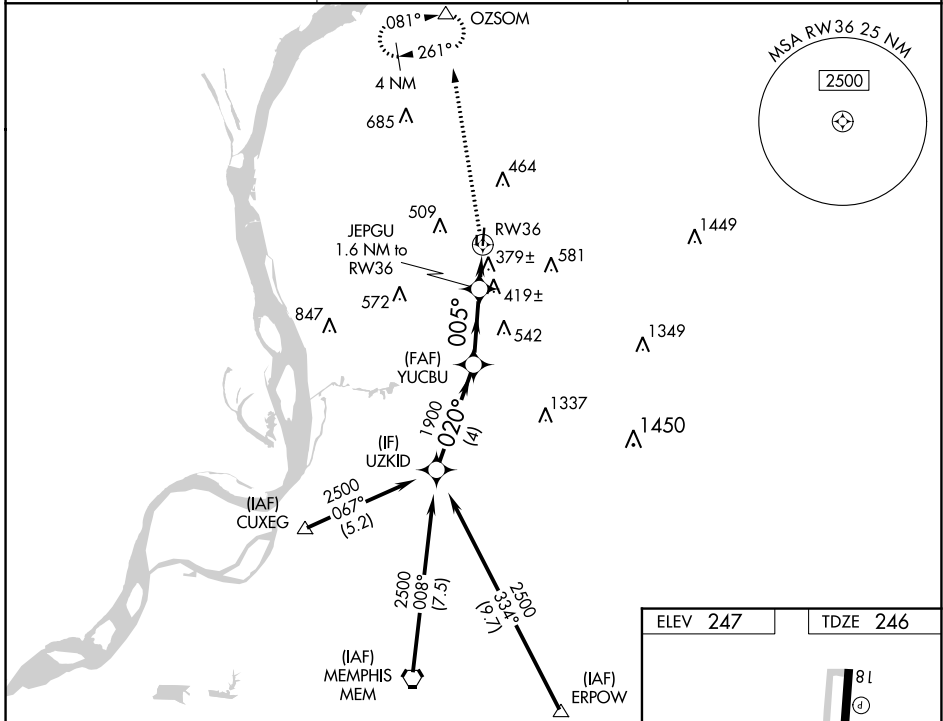
RNAV (GPS) RWY 36

CHARLES W BAKER (2M8)

▼ Baro-VNAV NA when using Millington Rgnl Jetport altimeter setting. For uncompensated Baro-VNAV systems, LNAV/VNAV NA below -15°C (5°F) or above 42°C (107°F).
▲ DME/DME RNP-0.3 NA. VDP NA with Millington Rgnl Jetport altimeter setting.
 When local altimeter setting not received, use Millington Rgnl Jetport altimeter setting and increase all DA 24 feet; increase all MDA 40 feet and LNAV Cat C visibility 1/8 mile.
 Rwy 36 helicopter visibility reduction below 3/4 SM NA.

MISSED APPROACH: Climb to 3000 direct OZSOM and hold, continue climb-in-hold to 3000.

AWOS-A 122.8	MEMPHIS APP CON 125.8 338.3	UNICOM 122.8 (CTAF)
------------------------	---------------------------------------	-------------------------------



CATEGORY	A		B		C		D
	1	2	1	2	1	2	
LPV DA	586-1		340 (400-1)				NA
LNAV/VNAV DA	689-1 ³ / ₈		443 (500-1 ³ / ₈)				NA
LNAV MDA	680-1		434 (500-1)		680-1 ¹ / ₄ 434 (500-1 ¹ / ₄)		NA
CIRCLING	740-1 493 (500-1)		780-1 533 (600-1)		860-1 ³ / ₄ 613 (700-1 ³ / ₄)		NA

SE-1, 25 MAR 2021 to 22 APR 2021

SE-1, 25 MAR 2021 to 22 APR 2021