

WAAS CH <b>56605</b> <b>W05A</b>	APP CRS <b>047°</b>	Rwy Idg TDZE Apt Elev	<b>5003</b> <b>1219</b> <b>1219</b>
--	------------------------	-----------------------------	---

# RNAV (GPS) RWY 5

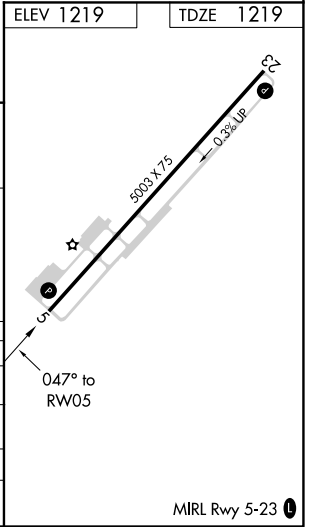
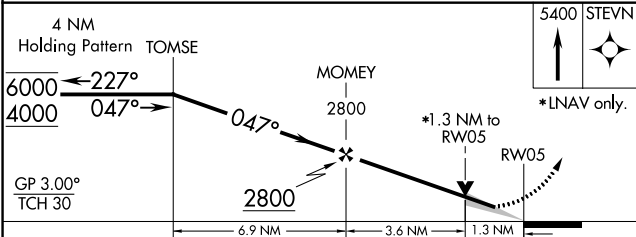
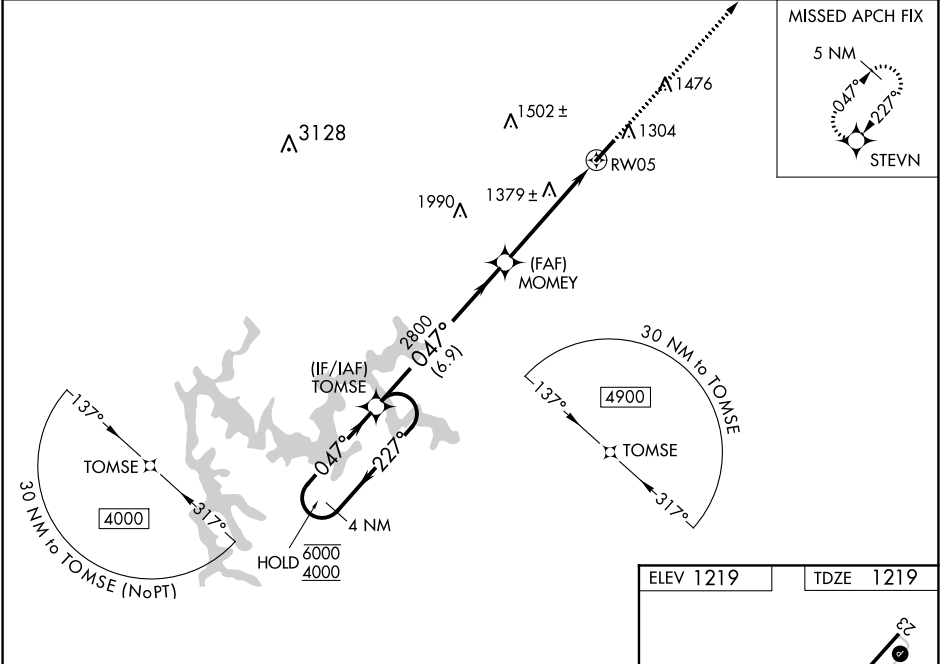
CHEROKEE COUNTY RGNL (CNI)

RNP APCH.

⚠ Circling Rwy 23 NA at night. Baro-VNAV and VDP NA when using Marietta altimeter setting. For uncompensated Baro-VNAV systems, LNAV/VNAV NA below -17°C or above 36°C. When local altimeter setting not received, use Marietta altimeter setting and increase LPV DA to 1532, LNAV/VNAV DA to 1617 and all MDA 80 feet; Increase LPV all Cats visibility 1/8 SM, increase LNAV Cats C and D visibility 1/8 SM, and increase Circling Cats C and D visibility 1/4 SM.

MISSED APPROACH: Climb to 5400 direct STEVN and hold, continue climb-in-hold to 5400.

AWOS-3 <b>119.825</b>	ATLANTA APP CON <b>121.0 268.7</b>	UNICOM <b>123.0 (CTAF) 0</b>
--------------------------	---------------------------------------	---------------------------------



CATEGORY	A	B	C	D
LPV DA		1469-7/8	250 (300-7/8)	
LNAV/VNAV DA		1554-1 1/8	335 (400-1 1/8)	
LNAV MDA	1640-1	421 (500-1)	1640-1 1/4	421 (500-1 1/4)
CIRCLING	1720-1	501 (600-1)	1820-1 3/4	2040-2 3/4
			601 (700-1 3/4)	821 (900-2 3/4)

SE-4, 25 MAR 2021 to 22 APR 2021

SE-4, 25 MAR 2021 to 22 APR 2021