

WAAS CH 65923 W23A	APP CRS 227°	Rwy Idg TDZE Apt Elev	5003 1218 1219
--	------------------------	-----------------------------	---

RNAV (GPS) RWY 23

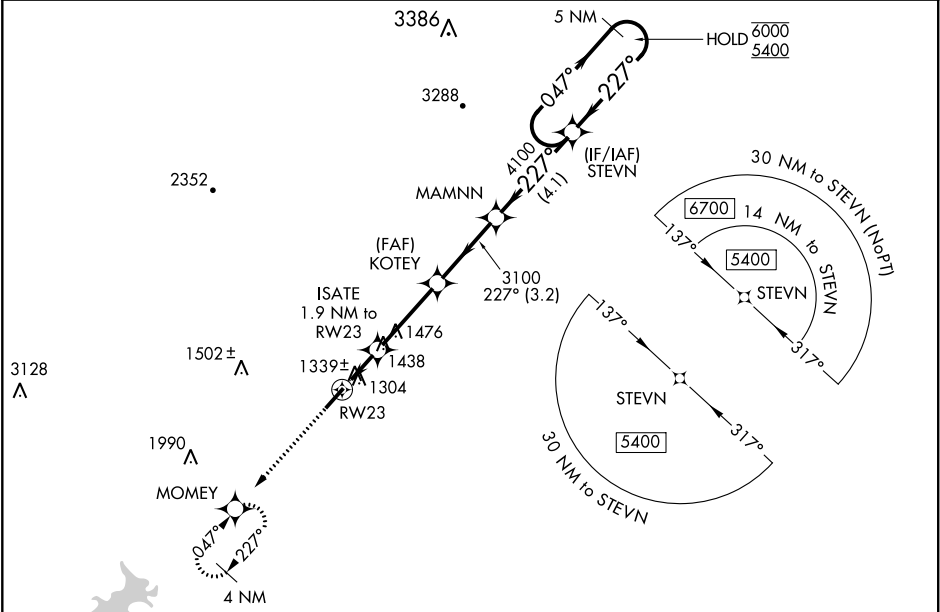
CHEROKEE COUNTY RGNL (CNI)

RNP APCH.

⚠ Rwy 23 helicopter visibility reduction below 1 SM NA. When local altimeter setting not received, use Marietta altimeter setting and increase all MDA 80 feet; Increase LP and Circling Cat C visibility ¼ SM and LNAV Cat C visibility ½ SM. Straight-in Rwy 23 NA at night, Circling Rwy 23 NA at night.

MISSED APPROACH: Climb to 4000 direct MOMEY and hold, continue climb-in-hold to 4000.

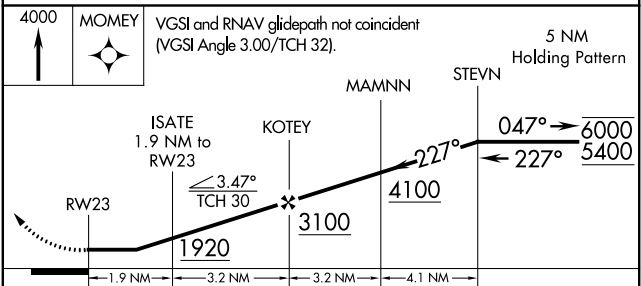
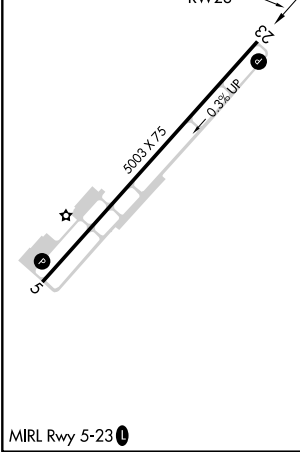
AWOS-3 119.825	ATLANTA APP CON 121.0 268.7	UNICOM 123.0 (CTAF)
--------------------------	---------------------------------------	-------------------------------



SE-4, 25 MAR 2021 to 22 APR 2021

SE-4, 25 MAR 2021 to 22 APR 2021

ELEV 1219	TDZE 1218
-----------	-----------



CATEGORY	A	B	C	D
LP MDA	1600-1	382 (400-1)	1600-1 1/8 382 (400-1 1/8)	NA
LNAV MDA	1740-1	522 (600-1)	1740-1 1/8 522 (600-1 1/8)	NA
C CIRCLING	1740-1	521 (600-1)	1820-1 3/4 601 (700-1 1/4)	NA