

NDB DJD <b>415</b>	APP CRS <b>047°</b>	Rwy Idg 5003
		TDZE 1219
		Apt Elev 1219

# NDB RWY 5

CHEROKEE COUNTY RGNL (CNI)

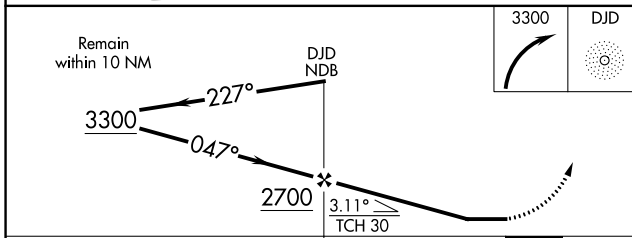
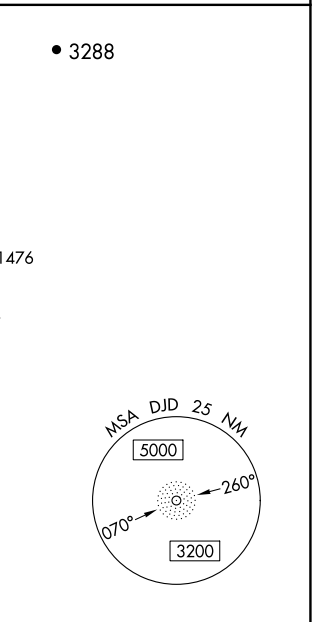
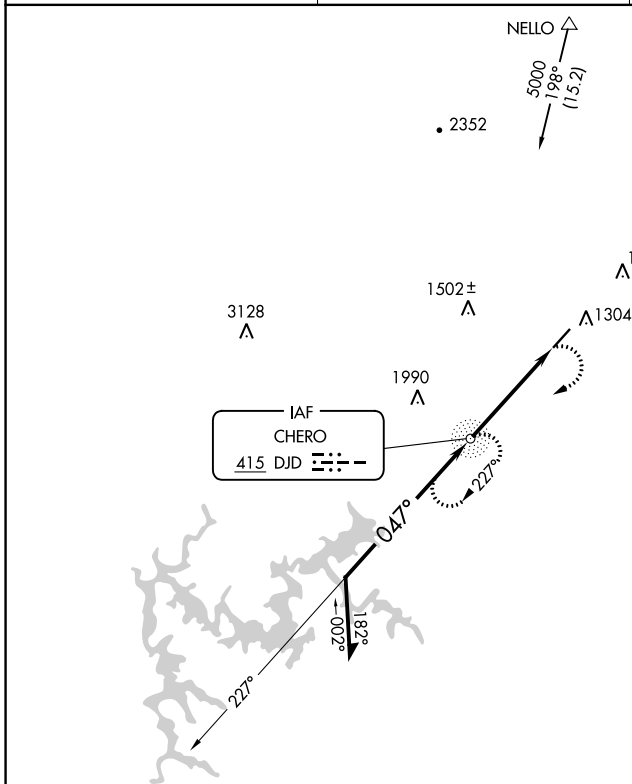
**⚠** Circling Rwy 23 NA at night. When local altimeter setting not received, use Marietta altimeter setting and increase all MDA 80 feet; increase S-5 Cat B and Circling Cats B and D visibility ¼ SM, increase S-5 Cats C and D visibility ½ SM, and increase Circling Cat C visibility ⅓ SM.

**MISSED APPROACH:** Climbing right turn to 3300 direct DJD NDB and hold, continue climb-in-hold to 3300.

AWOS-3  
**119.825**

ATLANTA APP CON  
**121.0 268.7**

UNICOM  
**123.0 (CTAF)**



ELEV 1219	TDZE 1219
-----------	-----------

3300	DJD
------	-----

047° 4.4 NM from FAF	MIRL Rwy 5-23
----------------------	---------------

FAF to MAP 4.4 NM					
Knots	60	90	120	150	180
Min:Sec	4:24	2:56	2:12	1:46	1:28

CATEGORY	A	B	C	D
S-5	1880-1	661 (700-1)	1880-1 7/8	661 (700-1 7/8)
<b>C</b> CIRCLING	1880-1	661 (700-1)	1880-1 7/8	2040-2 3/4 661 (700-1 7/8) 821 (900-2 3/4)

SE-4, 25 MAR 2021 to 22 APR 2021

SE-4, 25 MAR 2021 to 22 APR 2021