

APP CRS	Rwy Idg	6108
181°	TDZE	5024
	Apt Elev	5024

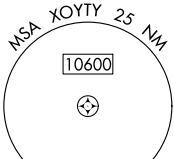
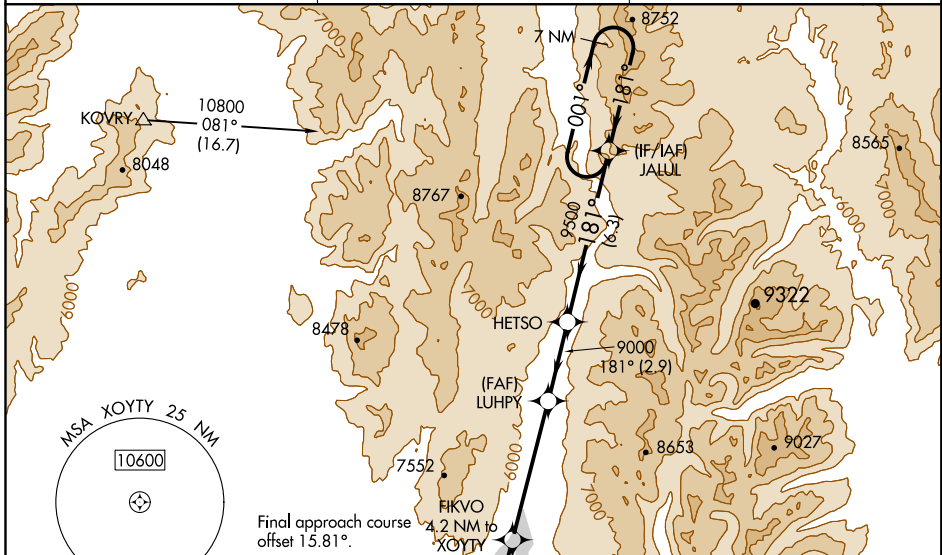
RNAV (GPS) RWY 16

MC CALL MUNI (MYL)

▼ Rwy 16 helicopter visibility reduction below 1 SM NA.
▲ DME/DME RNP-0.3 NA.
☁ -20°C Straight-in Rwy 16 NA at night, Circling Rwy 16 NA at night.

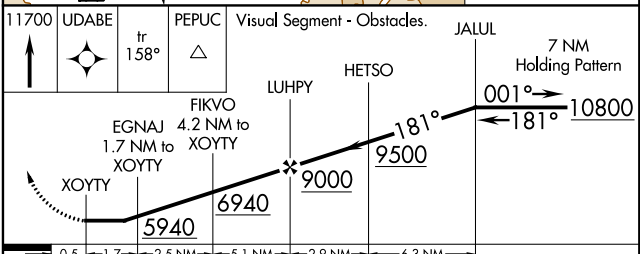
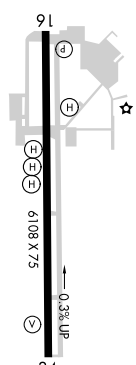
MISSED APPROACH: Climb to 11700 direct UDABE and on track 158° to PEPUC and hold, continue climb-in-hold to 11700.

ASOS 119.925	SALT LAKE CENTER 128.05 306.95	UNICOM 122.8 (CTAF)
------------------------	------------------------------------------	-------------------------------



Procedure NA for arrival on DNJ VOR/DME airway radials 325 CW 083.

ELEV 5024	TDZE 5024
-----------	-----------



CATEGORY	A	B	C	D
LNAV MDA	5520-1	496 (500-1)	5520-1 $\frac{3}{8}$ 496 (500-1 $\frac{3}{8}$)	NA
C CIRCLING	5940-1 $\frac{1}{4}$	916 (1000-1 $\frac{1}{4}$)	6140-3 1116 (1200-3)	NA

NW-1, 25 MAR 2021 to 22 APR 2021

NW-1, 25 MAR 2021 to 22 APR 2021