

WAAS CH 87004 W19A	APP CRS 194°	Rwy Idg TDZE Apt Elev	6115 1065 1071
---------------------------------	------------------------	-----------------------------	---

RNAV (GPS) RWY 19

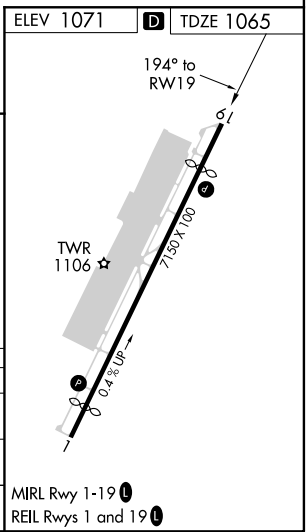
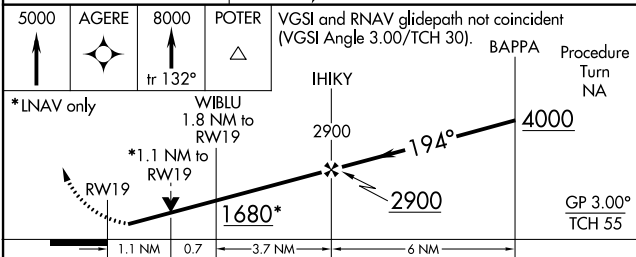
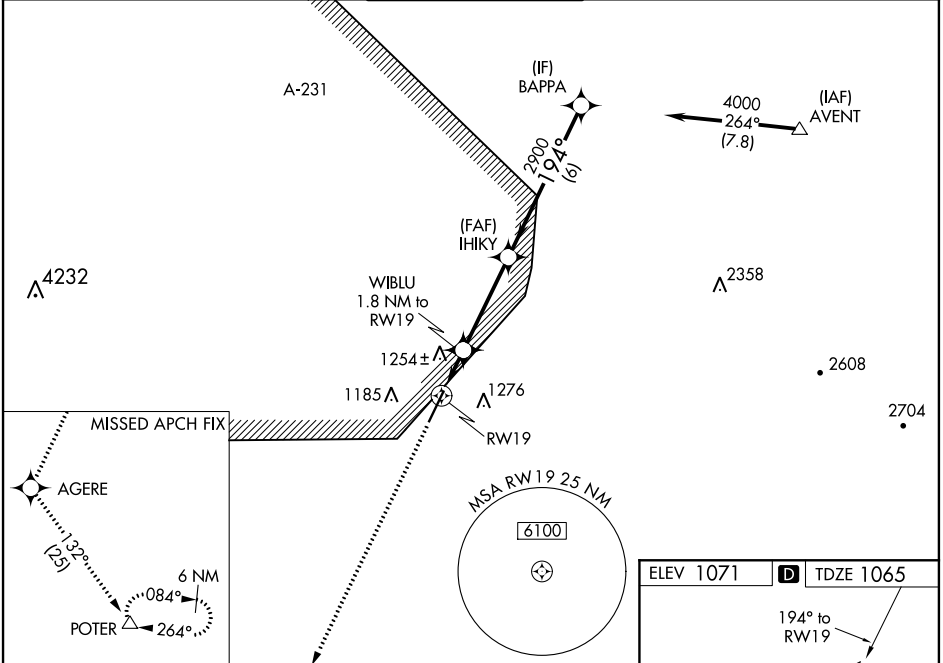
GLENDALE MUNI (GEU)

RNP APCH.

⚠ For uncompensated Baro-VNAV systems, LNAV/VNAV NA below -17°C or above 47°C.
⚠ Rwy 19 helicopter visibility reduction below 3/4 SM NA. VDP and Baro-VNAV NA when using Phoenix Sky Harbor Inl altimeter setting. When local altimeter setting not received, use Phoenix Sky Harbor Inl altimeter setting: increase LPV DA to 1384 feet; increase LNAV/VNAV DA to 1617 feet and all Cats visibility 1/4 SM; increase all MDA 60 feet and LNAV Cat C and D visibility 1/4 SM.

MISSED APPROACH: Climb to 5000 direct AGERE then climb to 8000 on track 132° to POTER and hold.

ATIS 119.425	LUKE APP CON* 118.15 363.125	GLENDALE TOWER* 121.0 (CTAF) 0	GND CON 118.0	UNICOM 122.95
------------------------	--	---	-------------------------	-------------------------



CATEGORY	A	B	C	D
LPV DA	1339-1		274 (300-1)	
LNAV/VNAV DA	1572-1 3/4		507 (600-1 3/4)	
LNAV MDA	1540-1	475 (500-1)	1540-1 3/8 475 (500-1 3/8)	1540-1 1/2 475 (500-1 1/2)

SW-4, 25 MAR 2021 to 22 APR 2021

SW-4, 25 MAR 2021 to 22 APR 2021