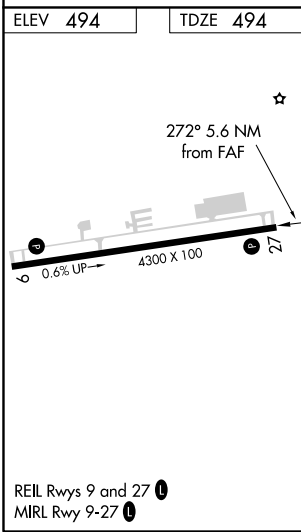
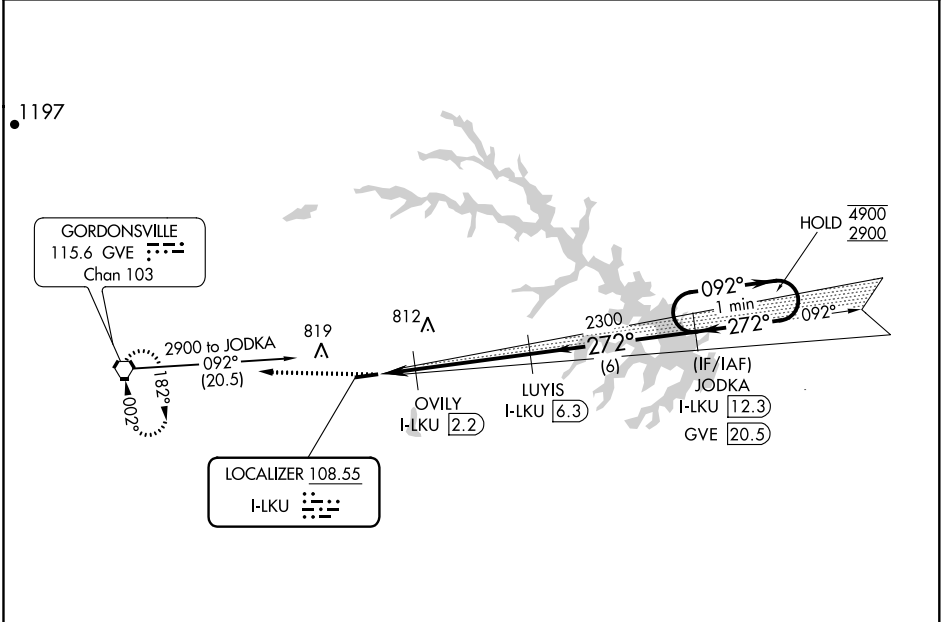


LOC I-LKU 108.55	APP CRS 272°	Rwy Idg TDZE Apt Elev	4300 494 494
----------------------------	------------------------	-----------------------------	---

LOC RWY 27

LOUISA COUNTY/FREEMAN FIELD (LKU)

DME required.		MISSED APPROACH: Climb to 2900 direct GVE VORTAC and hold.
AWOS-3 119.475	POTOMAC APP CON 132.85 323.125	UNICOM 122.975 (CTAF) 0



	2900	GVE	JODKA I-LKU [12.3]	One Minute Holding Pattern
		OVILV I-LKU [2.2]	LUYIS I-LKU [6.3]	
	I-LKU [0.8]	I-LKU [1.7]		
	980	2300		
	0.9 NM	0.5 NM	4.2 NM	6 NM
CATEGORY	A	B	C	D
S-LOC 27	820-1	326 (400-1)		NA
CIRCLING	900-1 406 (500-1)	960-1 466 (500-1)		NA

NE-3, 25 MAR 2021 to 22 APR 2021

NE-3, 25 MAR 2021 to 22 APR 2021