

WAAS CH 90532 W29A	APP CRS 286°	Rwy Idg TDZE Apt Elev	3602 120 121
--	------------------------	-----------------------------	---

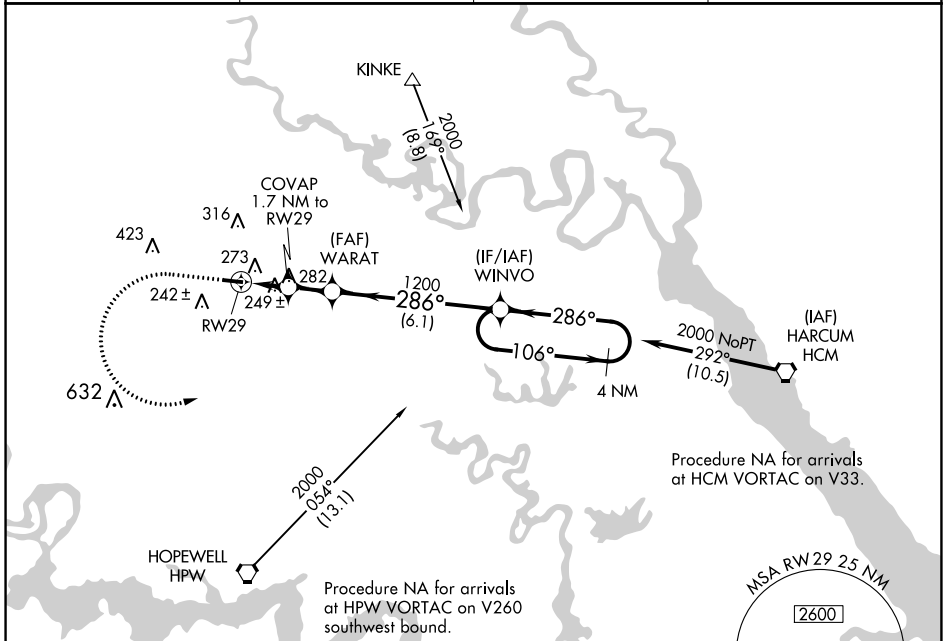
RNAV (GPS) RWY 29

NEW KENT COUNTY (W96)

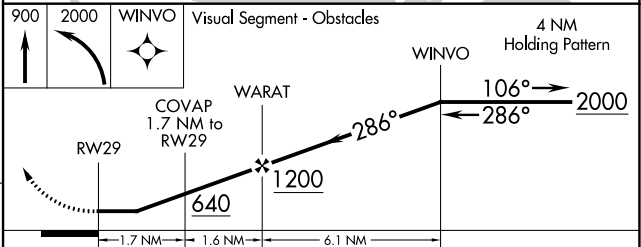
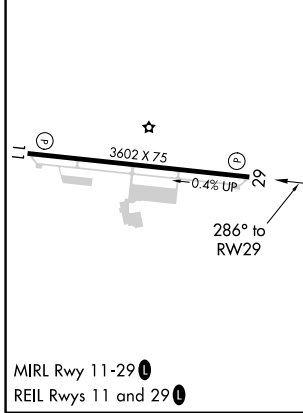
▽ Use Richmond Intl altimeter setting. DME/DME RNP-0.3 NA.
△ NA Helicopter visibility reduction below 1 SM NA.
 Procedure NA at night.

MISSED APPROACH: Climb to 900 then climbing left turn to 2000 direct WINVO and hold.

AWOS-3 119.875	RIC ASOS 119.15 263.025	POTOMAC APP CON 126.4 282.375	UNICOM 122.8 (CTAF) 0
--------------------------	-----------------------------------	---	--



ELEV 121	TDZE 120
----------	----------



CATEGORY	A	B	C	D
LP MDA	540-1	420 (500-1)	540-1 1/4 420 (500-1 1/4)	NA
LNAV MDA	560-1	440 (500-1)	560-1 3/8 440 (500-1 3/8)	NA
C CIRCLING	620-1	499 (500-1)	760-1 3/4 639 (700-1 3/4)	NA

NE-3, 25 MAR 2021 to 22 APR 2021

NE-3, 25 MAR 2021 to 22 APR 2021