

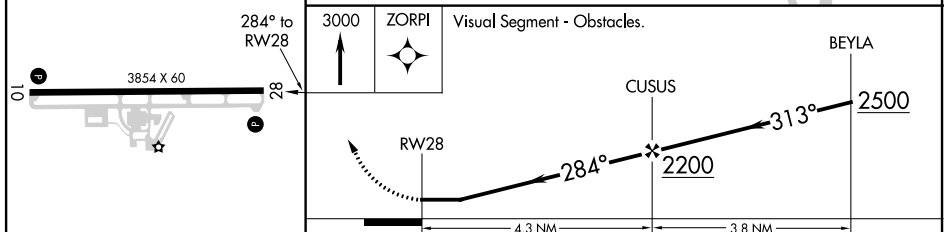
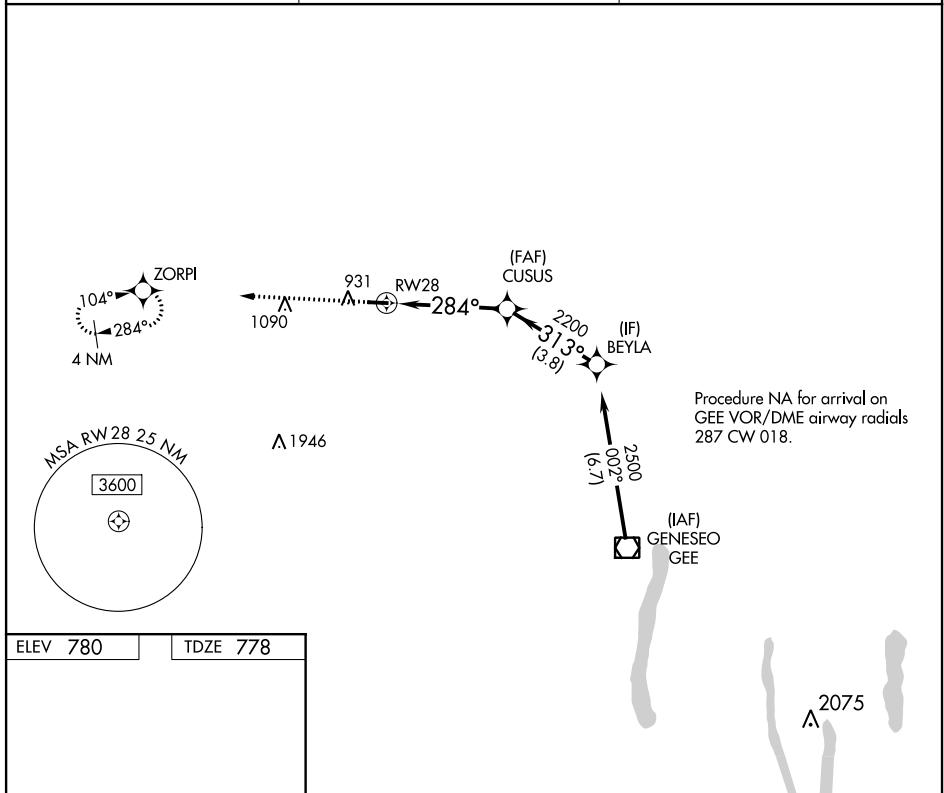
|  |                        |   |   |
|--|------------------------|---|---|
| WAAS<br>CH <b>69330</b><br><b>W28A</b> | APP CRS<br><b>284°</b> | Rwy Idg<br>TDZE <b>778</b><br>Apt Elev <b>780</b> | <b>3854</b><br><b>778</b><br><b>780</b> |
|--|------------------------|---|---|

# RNAV (GPS) RWY 28

LE ROY (5G0)

|  |  |  |
|--|--|--|
| RNP APCH.  | Procedure NA at night. Rwy 28 helicopter visibility reduction below 1 SM NA.<br>Use Greater Rochester altimeter setting. | MISSED APPROACH:<br>Climb to 3000 direct ZORPI and hold. |
| Procedure NA at night. Rwy 28 helicopter visibility reduction below 1 SM NA.<br>Use Greater Rochester altimeter setting. |  |  |

|                            |   |  |
|----------------------------|---|--|
| ROC ASOS<br><b>124.825</b> | ROCHESTER APP CON<br><b>123.7 322.3</b> | UNICOM<br><b>122.8</b> (CTAF) <b>1</b> |
|----------------------------|---|--|



| CATEGORY | A       | B           | C  | D |
|----------|---------|-------------|----|---|
| LP MDA   | 1 240-1 | 462 (500-1) | NA |   |
| LNAV MDA | 1 240-1 | 462 (500-1) | NA |   |

NE-2, 25 MAR 2021 to 22 APR 2021

NE-2, 25 MAR 2021 to 22 APR 2021