

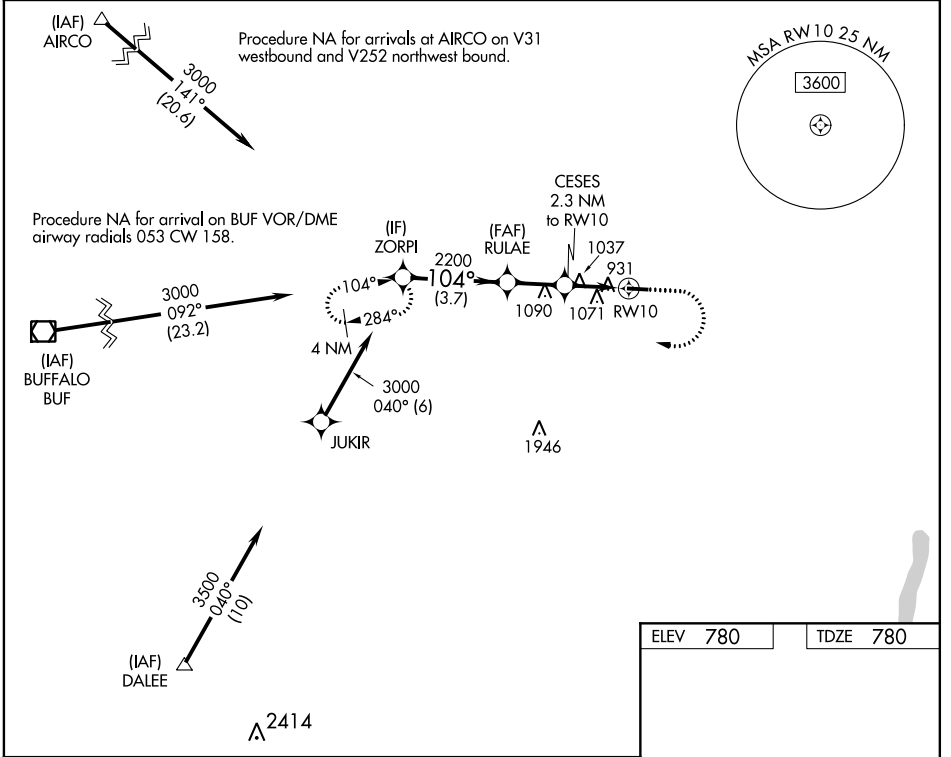
WAAS CH <b>61030</b> <b>W10A</b>	APP CRS <b>104°</b>	Rwy Idg TDZE Apt Elev	<b>3854</b> <b>780</b> <b>780</b>
--	------------------------	-----------------------------	---

# RNAV (GPS) RWY 10

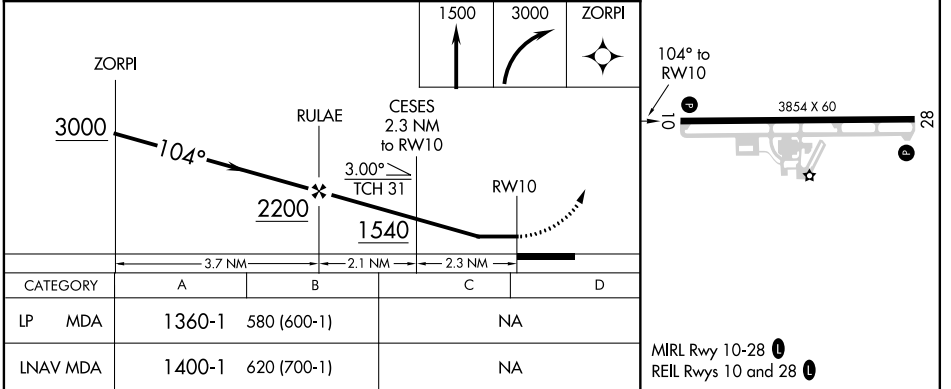
LE ROY (5G~~0~~)

RNP APCH.	MISSED APPROACH: Climb to 1500 then climbing right turn to 3000 direct ZORPI and hold.
<p>Procedure NA at night. Rwy 10 helicopter visibility reduction below 1 SM NA.</p> <p>NA Use Greater Rochester altimeter setting.</p>	

ROC ASOS <b>124.825</b>	ROCHESTER APP CON <b>123.7 322.3</b>	UNICOM <b>122.8 (CTAF) 0</b>
----------------------------	---	---------------------------------



ELEV 780	TDZE 780
----------	----------



NE-2, 25 MAR 2021 to 22 APR 2021