

APP CRS 247°	Rwy Idg TDZE Apt Elev	3003 1439 1439
------------------------	-----------------------------	---

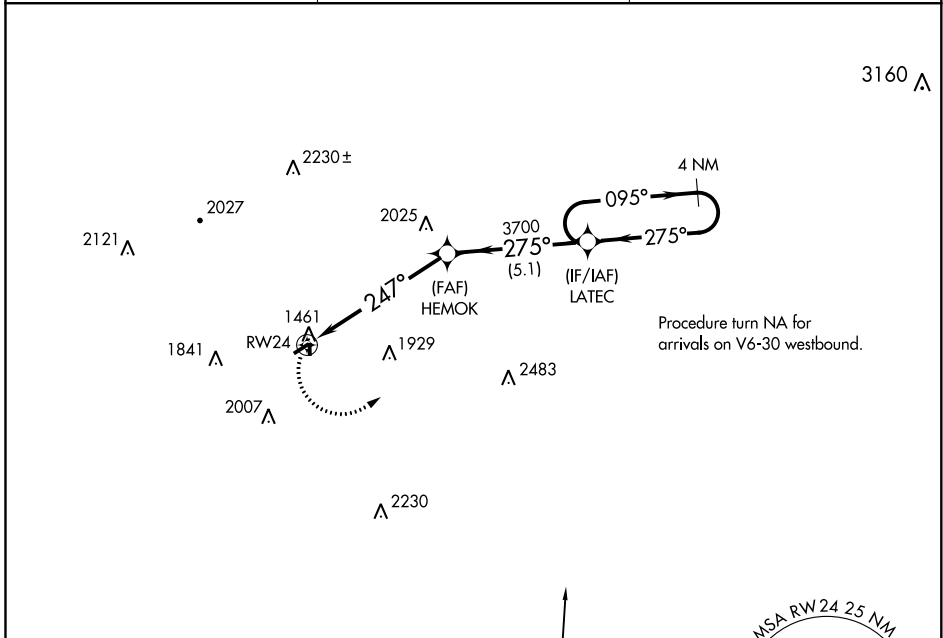
RNAV (GPS) RWY 24

PUNXSUTAWNEY MUNI (N35)

▽ Use Indiana County/Jimmy Stewart Field altimeter setting.
DME/DME RNP-0.3 NA.
▲ NA Helicopter visibility reduction below ¾ SM NA.

MISSED APPROACH: Climbing left turn to 4000 direct LATEC and hold.

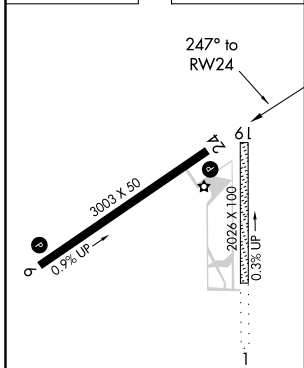
IDI AWOS-3 126.625	CLEVELAND CENTER 126.725 291.65	UNICOM 123.0 (CTAF) 0
------------------------------	---	---------------------------------



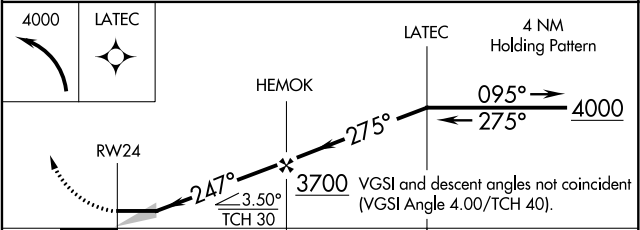
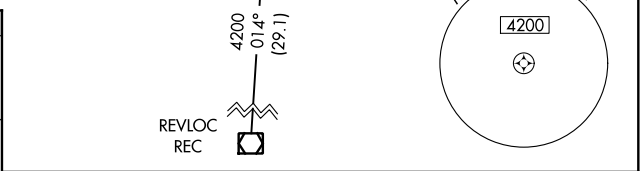
NE-4, 25 MAR 2021 to 22 APR 2021

NE-4, 25 MAR 2021 to 22 APR 2021

ELEV 1439	TDZE 1439
-----------	-----------



REIL Rwy's 1, 6, 19, and 24 0
MIRL Rwy's 1-19 and 6-24 0



CATEGORY	A	B	C	D
LNAV MDA	2160-1	721 (800-1)	NA	
CIRCLING	2160-1	721 (800-1)	NA	