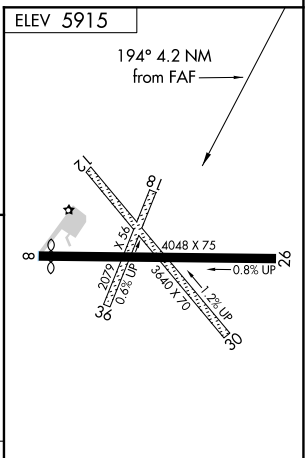
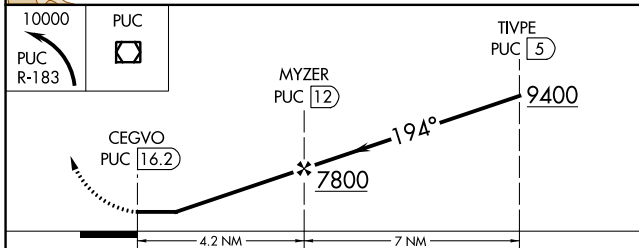
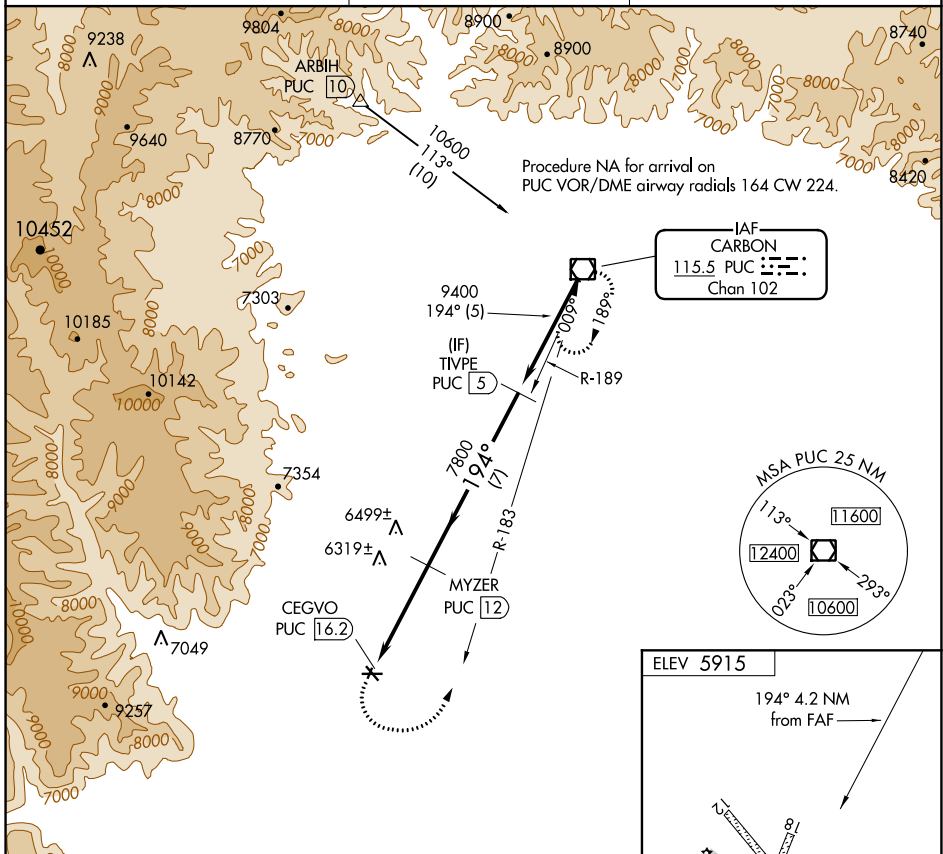


VOR/DME PUC 115.5 Chan 102	APP CRS 194°	Rwy Idg TDZE Apt Elev N/A N/A 5915
--	------------------------	--

VOR-B
HUNTINGTON MUNI (69V)

⚠ Rwy 8, 12, 26, 30 helicopter visibility reduction below 1 SM NA.
⚠ NA DME required. Procedure NA at night. Use Price altimeter setting; when not received, procedure NA.
 MISSED APPROACH: Climbing left turn to 10000 on PUC VOR/DME R-183 to PUC VOR/DME and hold.

PUC ASOS 135.425	SALT LAKE CENTER 133.9 370.85	UNICOM 122.8 (CTAF) 📻
----------------------------	---	--



CATEGORY	A	B	C	D
CIRCLING	6620-1	705 (800-1)	6620-2 705 (800-2)	NA

MIRL Rwy 8-26 **📻**

SW-4, 25 MAR 2021 to 22 APR 2021

SW-4, 25 MAR 2021 to 22 APR 2021