

WAAS CH <b>56625</b> <b>W04A</b>	APP CRS <b>039°</b>	Rwy Idg TDZE Apt Elev	<b>3799</b> <b>1383</b> <b>1394</b>
--	------------------------	-----------------------------	---

# RNAV (GPS) RWY 4L

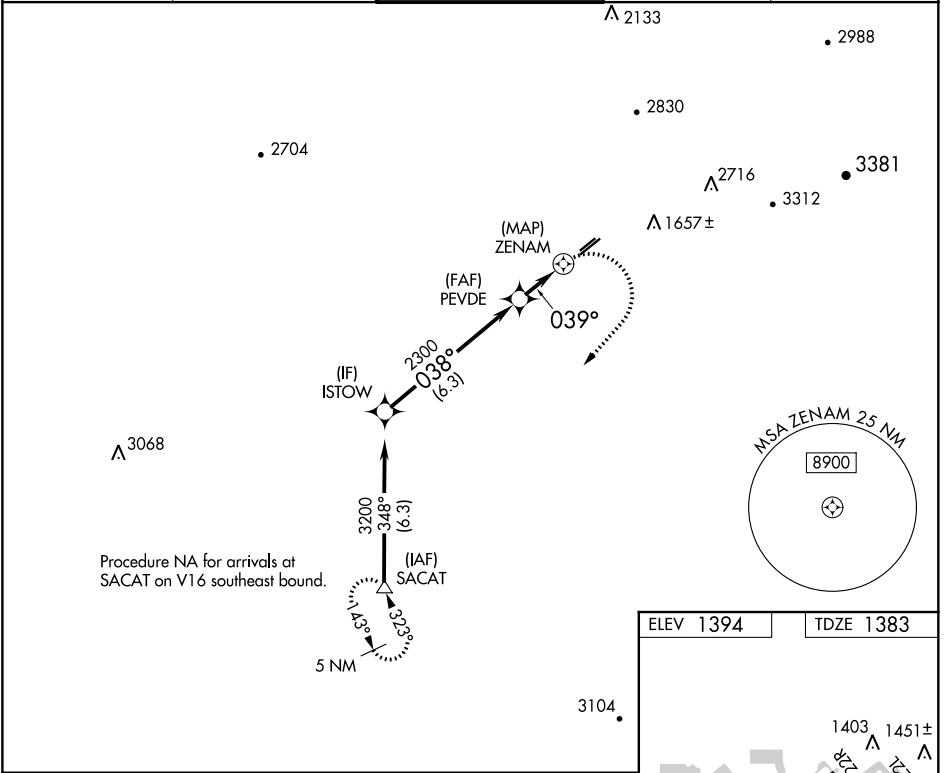
FALCON FIELD (F'F'Z)

RNP APCH.

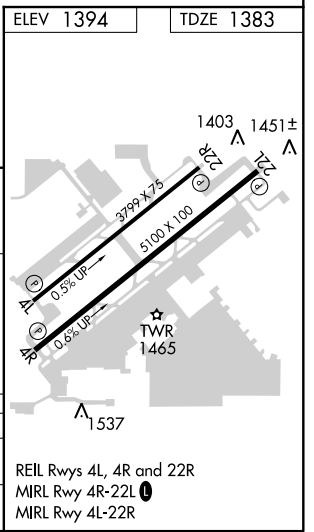
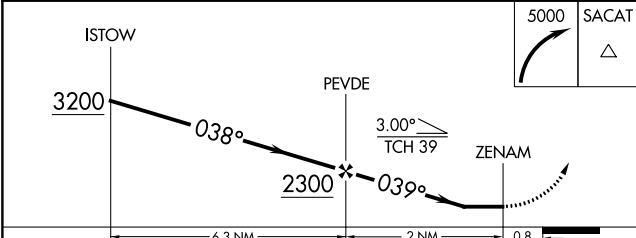
**⚠** When local altimeter setting not received, use Phoenix Sky Harbor Intl altimeter setting and increase all MDA 80 feet and increase LP Cat C visibility ¼ SM and LNAV Cat C visibility ⅓ SM.

MISSED APPROACH: Climbing right turn to 5000 direct SACAT and hold, continue climb-in-hold to 5000.

ATIS <b>118,25</b>	PHOENIX APP CON <b>120.7 239.0</b>	FALCON TOWER ★ <b>124.6 (CTAF) 0</b>	GND CON <b>121.3</b>	UNICOM <b>122.95</b>
-----------------------	---------------------------------------	---	-------------------------	-------------------------



Procedure NA for arrivals at SACAT on V16 southeast bound.



	6.3 NM		2 NM		0.8 NM
CATEGORY	A	B	C	D	
LP MDA	1780-1	397 (400-1)	1780-1½ 397 (400-1½)	NA	
LNAV MDA	1800-1	417 (500-1)	1800-1¼ 417 (500-1¼)	NA	

SW-4, 25 MAR 2021 to 22 APR 2021

SW-4, 25 MAR 2021 to 22 APR 2021

REIL Rwy 4L, 4R and 22R  
MIRL Rwy 4R-22L  
MIRL Rwy 4L-22R