

WAAS CH 69408 W34A	APP CRS 342°	Rwy Idg TDZE Apt Elev	5498 299 300
--	------------------------	-----------------------------	---

RNAV (GPS) RWY 34

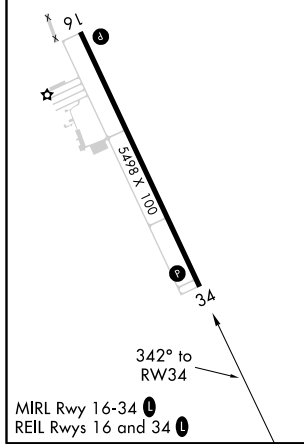
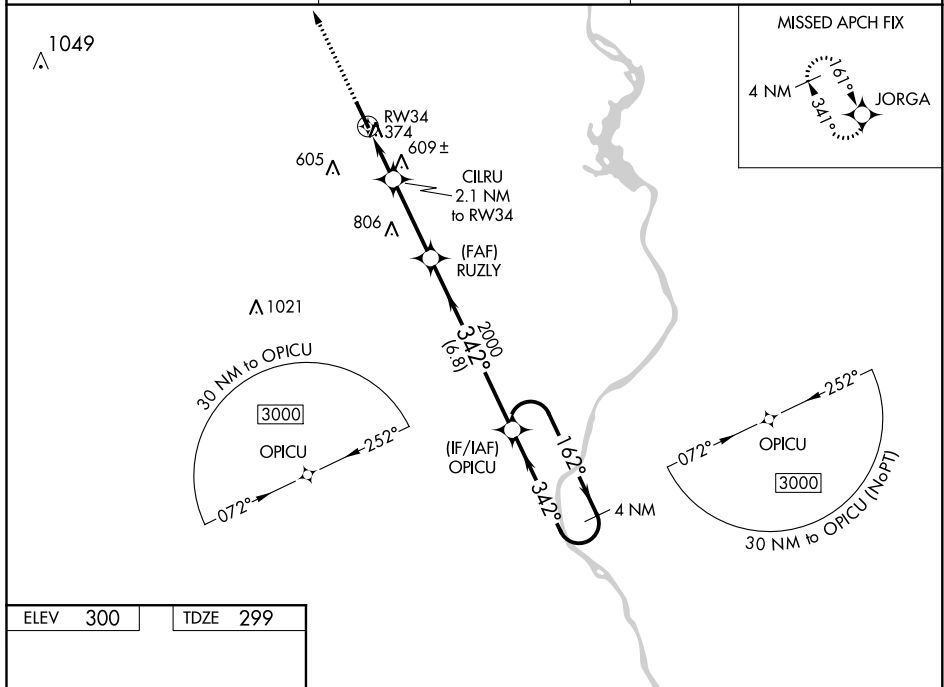
ANSON COUNTY-JEFF CLOUD FIELD (A/F/P)

RNP APCH - GPS.

⚠ Circling Rwy 16 NA at night. Baro-VNAV NA when using Rockingham altimeter setting. For uncompensated Baro-VNAV systems, LNAV/VNAV NA below -15°C or above 42°C. When local altimeter setting not received, use Rockingham altimeter setting; increase LPV DA to 598 and all visibilities 1/8 SM; increase LNAV/VNAV DA to 1006 and all visibilities 1/8 SM; increase all MDA 60 feet, LNAV visibility Cats C/D 1/8 SM and Circling visibility Cat D 1/8 SM.

MISSED APPROACH:
Climb to 3000 direct
JORGA and hold.

AWOS-3 119,325	CHARLOTTE APP CON 120.05 307.8	UNICOM 122.8 (CTAF) 0
--------------------------	--	---------------------------------



3000	JORGA	VGSi and RNAV glidepath not coincident (VGSi Angle 3.00/TCH 45).		4 NM Holding Pattern
*LNAV only	CILRU 2.1 NM to RW34	RUZLY 2000	OPICU	3000
	*1000	2000	GP 3.00° TCH 42	
	2.1 NM	3.1 NM	6.8 NM	
CATEGORY	A	B	C	D
LPV DA	549-3/4		250 (300-3/4)	
LNAV/VNAV DA	957-17/8		658 (700-17/8)	
LNAV MDA	860-1	561 (600-1)	860-1 1/2	561 (600-1 1/2)
CIRCLING	860-1	560 (600-1)	1080-2 1/4 780 (800-2 1/4)	1080-2 1/2 780 (800-2 1/2)

SE-2, 25 MAR 2021 to 22 APR 2021

SE-2, 25 MAR 2021 to 22 APR 2021