

RNAV (GPS) RWY 19

JAMES A RHODES (I43)

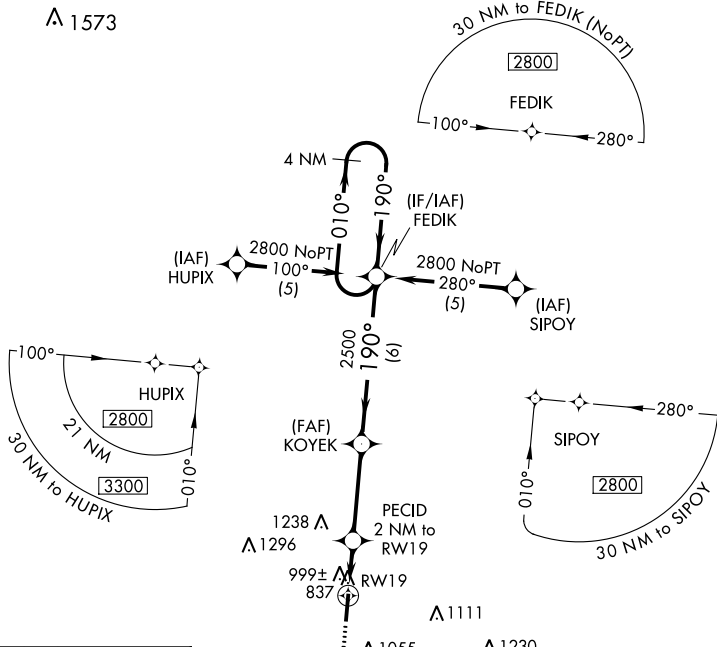
APP CRS 190°	Rwy Idg TDZE Apt Elev	5201 726 726
------------------------	-----------------------------	---

RNP APCH.

▼ When local altimeter setting not received, use Greater Portsmouth altimeter setting and increase all MDA 60 feet, and increase LNAV Cat C/D and Circling Cat B/C/D visibilities ¼ mile. Rwy 19 helicopter visibility reduction below ¾ SM NA. Circling Rwy 1 NA at night.

MISSED APPROACH:
Climb to 2800 direct
OSATE WP and hold.

AWOS-3 118.825	HUNTINGTON APP CON 128.4 270.1	UNICOM 122.7 (CTAF) 0
--------------------------	--	---------------------------------

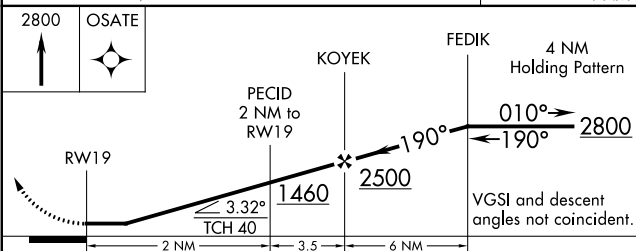


EC-2, 25 MAR 2021 to 22 APR 2021

EC-2, 25 MAR 2021 to 22 APR 2021

ELEV 726	TDZE 726
----------	----------

MIRL Rwy 1-19



CATEGORY	A	B	C	D
LNAV MDA	1280-1	554 (600-1)	1280-1½ 554 (600-1½)	1280-1¾ 554 (600-1¾)
CIRCLING	1340-1 614 (700-1)	1420-1 694 (700-1)	1420-2 694 (700-2)	1420-2½ 694 (700-2½)