

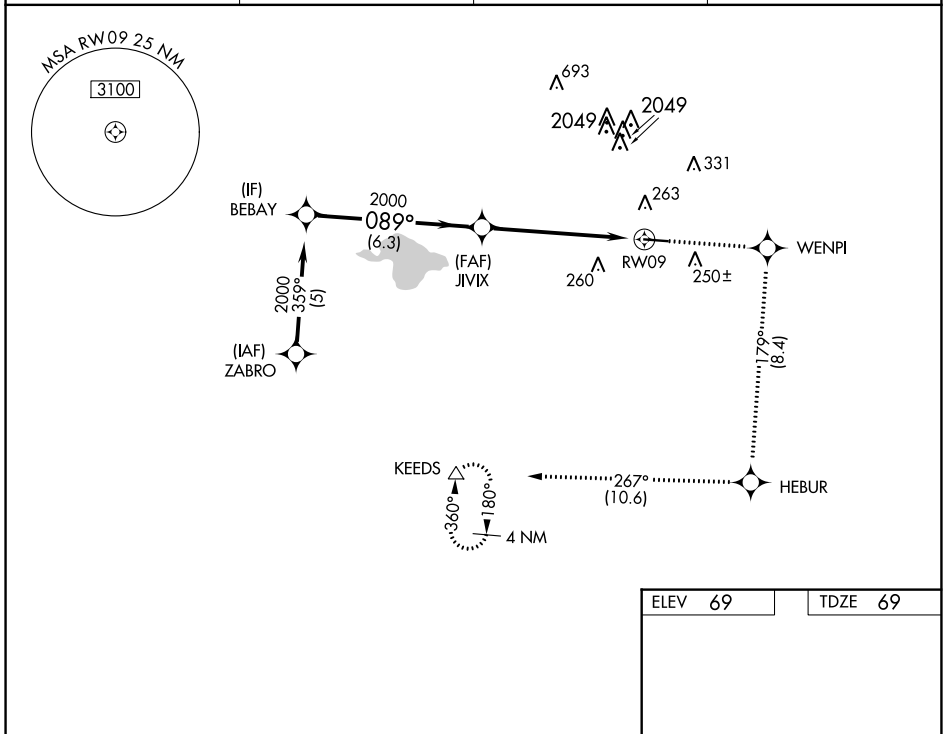
APP CRS	Rwy Idg	<b>5002</b>
<b>089°</b>	TDZE	<b>69</b>
	Apt Elev	<b>69</b>

# RNAV (GPS) RWY 9

HOUSTON-SOUTHWEST (AXH)

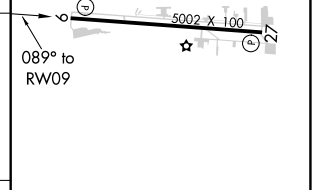
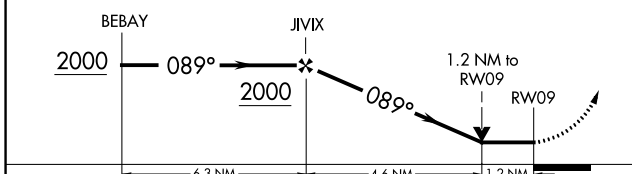
RNP APCH.		MISSED APPROACH: Climb to 2700 direct WENPI and on track 179° to HEBUR and on track 267° to KEEDS and hold.	
<p>▼ Circling Rwy 27 NA at night. Rwy 9 helicopter visibility reduction below 3/4 SM NA.</p>			

AWOS-3 <b>123.625</b>	HOUSTON APP CON <b>123.8 257.7</b>	CLNC DEL <b>120.8</b>	UNICOM <b>123.0 (CTAF) 0</b>
--------------------------	---------------------------------------	--------------------------	---------------------------------



ELEV	69	TDZE	69
------	----	------	----

VGSI and descent angles not coincident (VGSI Angle 3.50/TCH 50).	2700	WENPI	tr	HEBUR	tr	KEEDS
	↑	✧	179°	✧	267°	△



CATEGORY	A	B	C	D
RNAV MDA	580-1	511 (600-1)	580-1½ 511 (600-1½)	NA
CIRCLING	620-1	551 (600-1)	620-1½ 551 (600-1½)	NA

REIL Rwy 9 and 27 0  
MIRL Rwy 9-27 0

SC-5, 25 MAR 2021 to 22 APR 2021

SC-5, 25 MAR 2021 to 22 APR 2021