

(LURIC7.LURIC) 19115

AL-6575 (FAA)

HOUSTON-SOUTHWEST (A.XH)

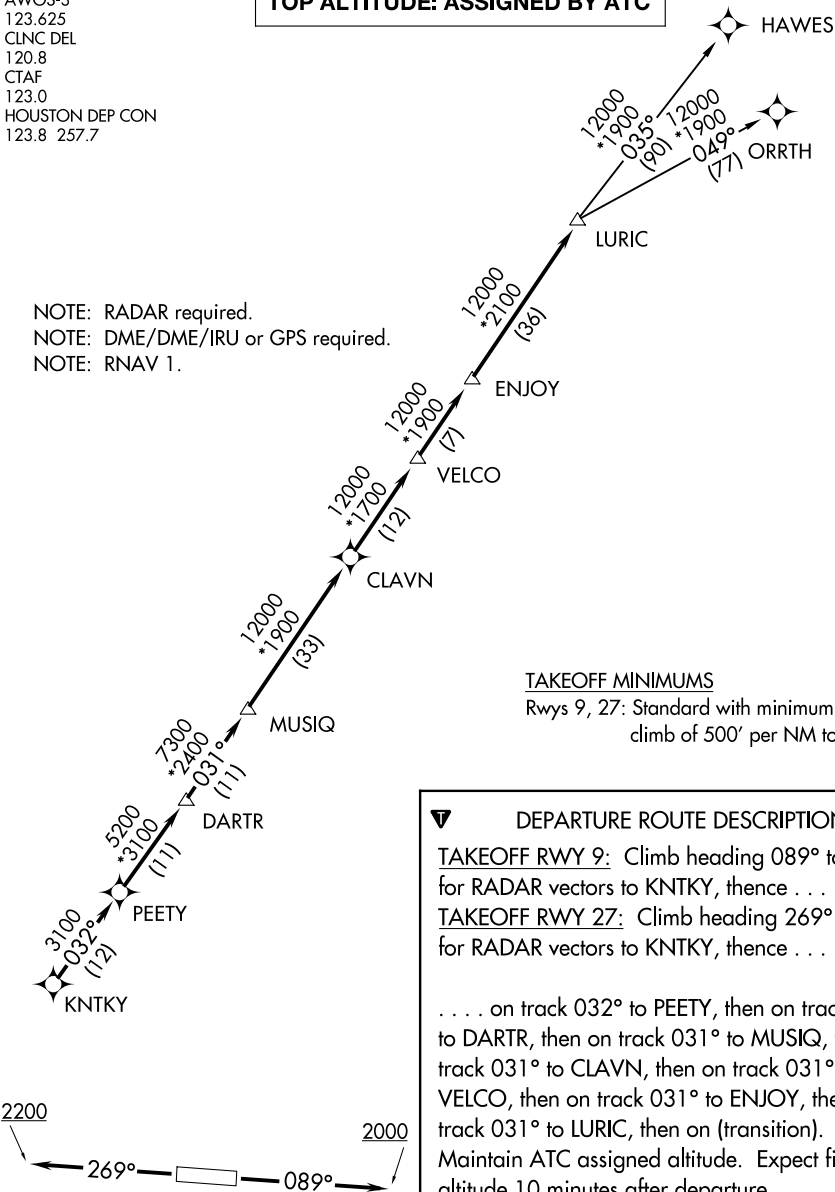
LURIC SEVEN DEPARTURE (RNAV)

HOUSTON, TEXAS

AWOS-3
123.625
CLNC DEL
120.8
CTAF
123.0
HOUSTON DEP CON
123.8 257.7

TOP ALTITUDE: ASSIGNED BY ATC

NOTE: RADAR required.
NOTE: DME/DME/IRU or GPS required.
NOTE: RNAV 1.



TAKEOFF MINIMUMS

Rwys 9, 27: Standard with minimum climb of 500' per NM to 580.

DEPARTURE ROUTE DESCRIPTION

TAKEOFF RWY 9: Climb heading 089° to 2000 for RADAR vectors to KNTKY, thence . . .

TAKEOFF RWY 27: Climb heading 269° to 2200 for RADAR vectors to KNTKY, thence . . .

. . . on track 032° to PEETY, then on track 032° to DARTR, then on track 031° to MUSIQ, then on track 031° to CLAVN, then on track 031° to VELCO, then on track 031° to ENJOY, then on track 031° to LURIC, then on (transition). Maintain ATC assigned altitude. Expect filed altitude 10 minutes after departure.

HAWES TRANSITION (LURIC7.HAWES)

ORRTH TRANSITION (LURIC7.ORRTH)

NOTE: Chart not to scale.

LURIC SEVEN DEPARTURE (RNAV)

(LURIC7.LURIC) 25APR19

HOUSTON, TEXAS

HOUSTON-SOUTHWEST (A.XH)

SC-5, 25 MAR 2021 to 22 APR 2021

SC-5, 25 MAR 2021 to 22 APR 2021