

(INDIE7.INDIE) 19115

AL-6575 (FAA)

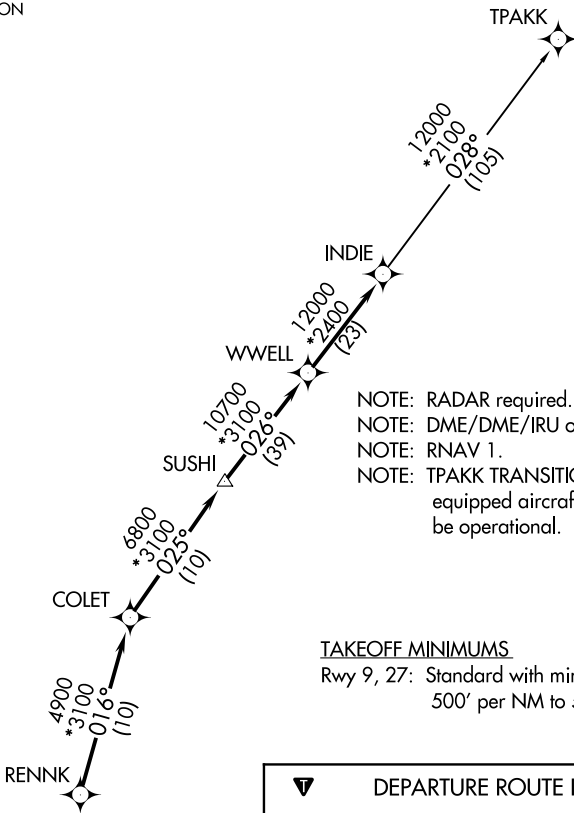
HOUSTON-SOUTHWEST (AXH)

INDIE SEVEN DEPARTURE (RNAV)

HOUSTON, TEXAS

AWOS-3
123.625
CLNC DEL
120.8
CTAF
123.0
HOUSTON DEP CON
123.8 257.7

**TOP ALTITUDE:
ASSIGNED BY ATC**



- NOTE: RADAR required.
- NOTE: DME/DME/IRU or GPS required.
- NOTE: RNAV 1.
- NOTE: TPAKK TRANSITION: For non GPS equipped aircraft TNV DME must be operational.

TAKEOFF MINIMUMS

Rwy 9, 27: Standard with minimum climb of 500' per NM to 580.

DEPARTURE ROUTE DESCRIPTION

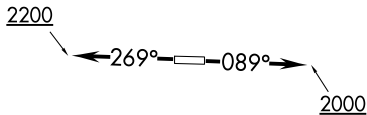
TAKEOFF RWY 9: Climb heading 089° to 2000 for RADAR vectors to RENNK, thence . . .

TAKEOFF RWY 27: Climb heading 269° to 2200 for RADAR vectors to RENNK, thence . . .

. . . on track 016° to COLET, then on track 025° to SUSHI, then on track 026° to WWELL, then on track 026° to INDIE, then on (transition).

Maintain ATC assigned altitude. Expect filed altitude 10 minutes after departure.

TPAKK TRANSITION (INDIE7.TPAKK)



NOTE: Chart not to scale.

INDIE SEVEN DEPARTURE (RNAV)

(INDIE7.INDIE) 25APR19

HOUSTON, TEXAS

HOUSTON-SOUTHWEST (AXH)

SC-5, 25 MAR 2021 to 22 APR 2021

SC-5, 25 MAR 2021 to 22 APR 2021