

WAAS CH <b>99730</b> <b>W21A</b>	APP CRS <b>217°</b>	Rwy Idg TDZE Apt Elev	<b>5153</b> <b>1372</b> <b>1372</b>
--	------------------------	-----------------------------	---

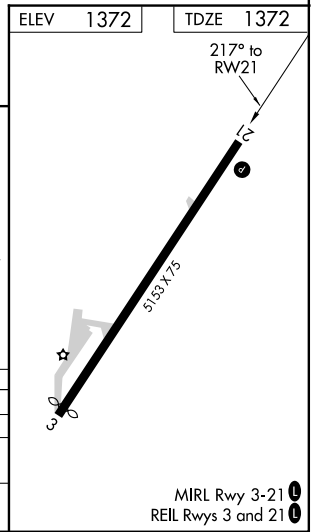
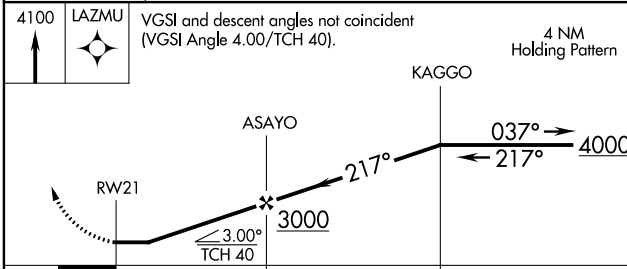
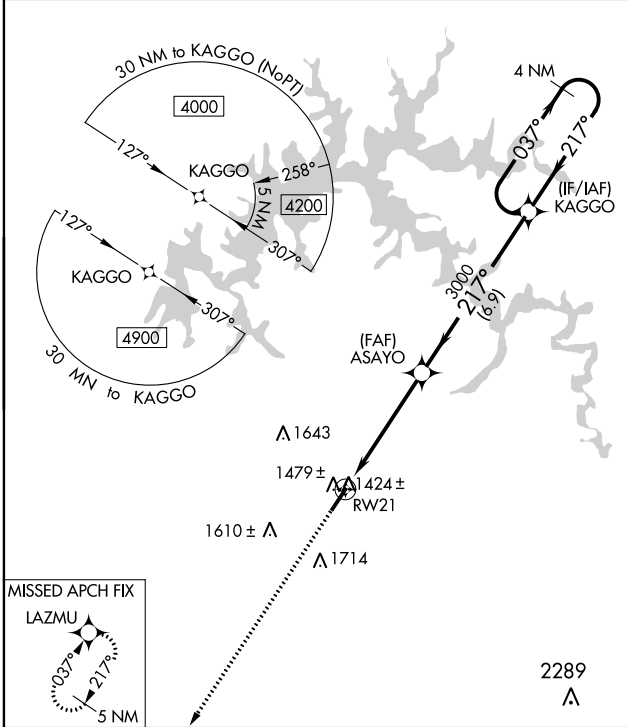
# RNAV (GPS) RWY 21

LIVINGSTON MUNI (8A.3)

**NA** DME/DME RNP-0.3 NA. Circling Rwy 3 NA at night. When local altimeter setting not received, use Crossville altimeter setting and increase all MDA 140 feet; increase LP and LNAV Cats C/D visibility  $\frac{3}{8}$  mile; increase Circling Cat B visibility  $\frac{1}{4}$  mile and Circling Cats C/D visibility  $\frac{1}{2}$  mile. Rwy 21 helicopter visibility reduction below  $\frac{3}{4}$  SM NA.

**MISSED APPROACH:**  
Climb to 4100 direct LAZMU and hold.

AWOS-3 <b>126.175</b>	INDIANAPOLIS CENTER <b>124.625 371.925</b>	UNICOM <b>122.8 (CTAF) 0</b>
--------------------------	---	---------------------------------



CATEGORY	A	B	C	D
LP MDA		1680-1	308 (400-1)	
LNAV MDA	1760-1	388 (400-1)	1760-1 $\frac{1}{8}$	388 (400-1 $\frac{1}{8}$ )
CIRCLING	1860-1 488 (500-1)	2080-1 708 (800-1)	2080-2 708 (800-2)	2080-2 $\frac{1}{4}$ 708 (800-2 $\frac{1}{4}$ )

MIRL Rwy 3-21 0  
REIL Rwy 3 and 21 0

SE-1, 25 MAR 2021 to 22 APR 2021

SE-1, 25 MAR 2021 to 22 APR 2021