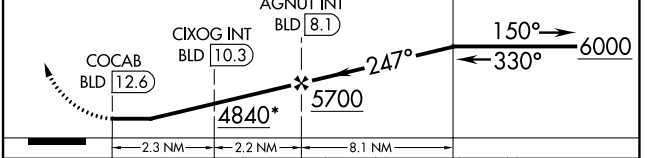
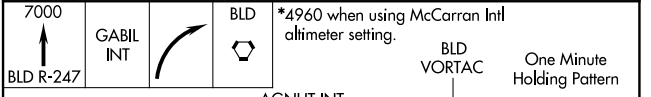
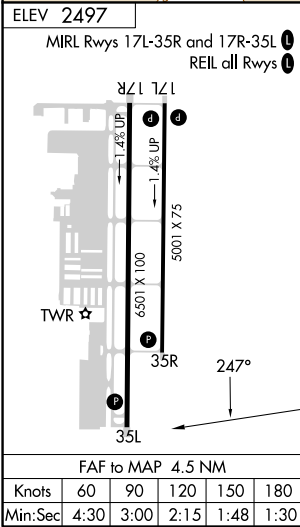
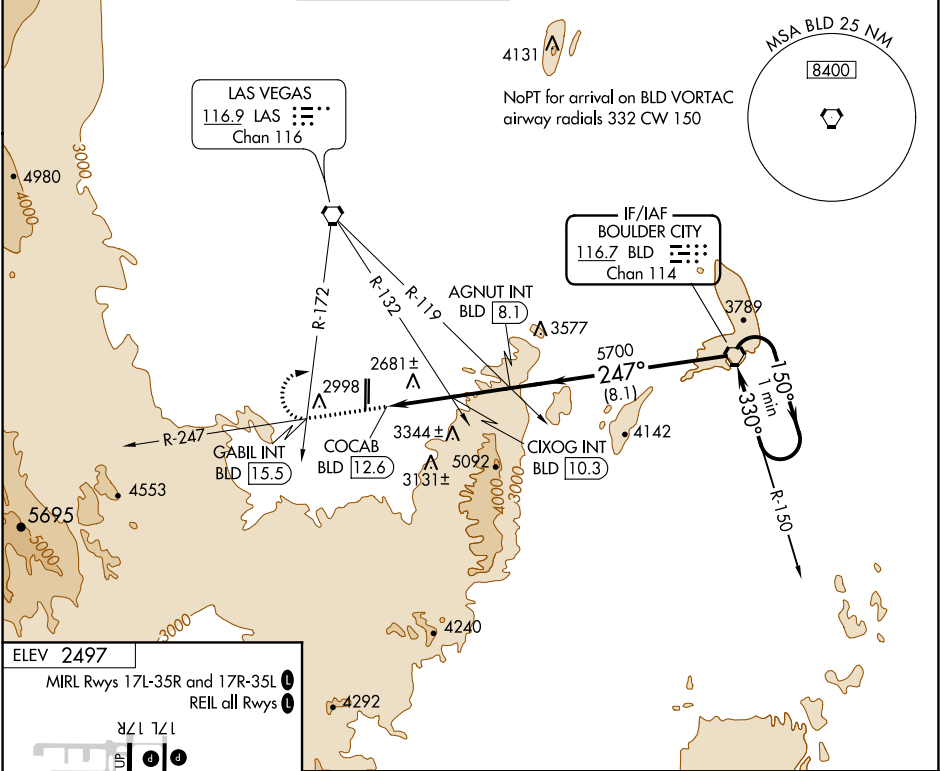


VORTAC BLD 116.7 Chan 114	APP CRS 247°	Rwy Idg TDZE Apt Elev N/A N/A 2497
---	------------------------	--

VOR-C
HENDERSON EXECUTIVE (HND)

<p>⚠ Circling to Rwy 35L NA at night. If local altimeter setting not received, use McCarran Intl altimeter setting and increase all MDAs 60 feet.</p>	<p>MISSED APPROACH: Climb to 7000 on BLD VORTAC R-247 to GABIL INT/BLD 15.5 DME and right turn direct BLD VORTAC and hold.</p>
--	--

ATIS 120.775	LAS VEGAS APP CON 118.4 307.25	HENDERSON TOWER* 125.1 (CTAF) 0	GND CON 127.8	CLNC DEL 135.35	CLNC DEL 125.9 (when twr closed)	UNICOM 122.95
------------------------	--	--	-------------------------	---------------------------	---	-------------------------



CATEGORY	A	B	C	D
CIRCLING	4840-1¼ 2343 (2400-1¼)	4840-1½ 2343 (2400-1½)	4840-3 2343 (2400-3)	NA
CIXOG FIX MINIMUMS (DUAL VOR RECEIVERS OR DME REQUIRED)				
CIRCLING	3620-1¼ 1123 (1200-1¼)	3620-1½ 1123 (1200-1½)	3620-3 1123 (1200-3)	NA

SW-4, 25 MAR 2021 to 22 APR 2021

SW-4, 25 MAR 2021 to 22 APR 2021