

WAAS CH <b>58312</b> <b>W25A</b>	APP CRS <b>251°</b>	Rwy Idg TDZE Apt Elev	<b>5008</b> <b>5</b> <b>5</b>
----------------------------------------	------------------------	-----------------------------	-------------------------------------

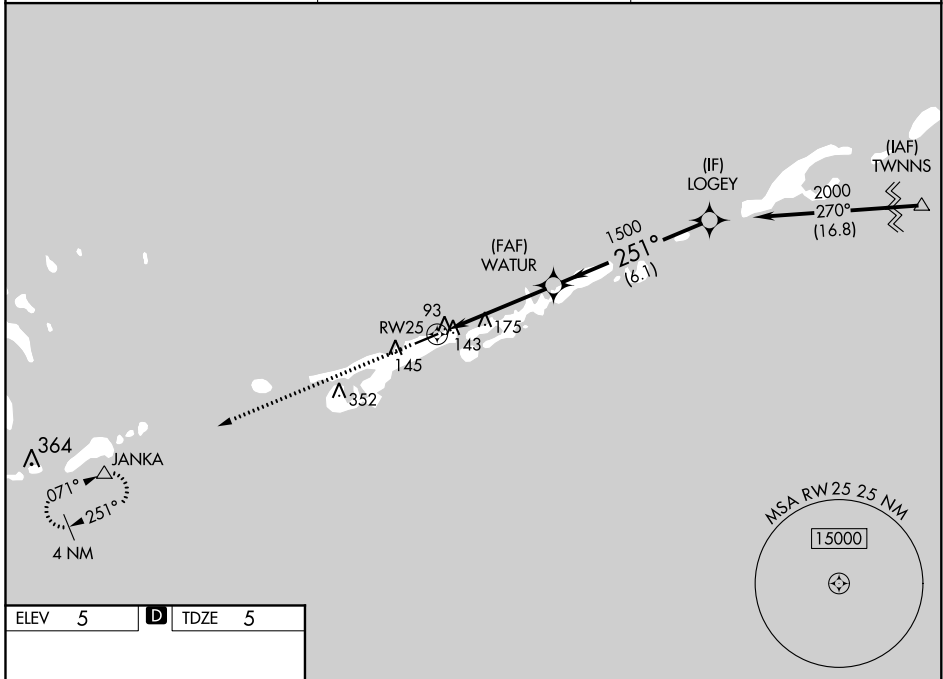
# RNAV (GPS) RWY 25

THE FLORIDA KEYS MARATHON INTL (MTH)

**▽** DME/DME RNP-0.3 NA. Helicopter visibility reduction below ¾ SM NA. When local altimeter setting not received, use Key West Intl altimeter setting and increase all DA 93 feet and MDA 100 feet, and increase LPV all Cats visibility ½ mile; LNAV/VNAV all Cats visibility ¼ mile; LNAV Cats C and D visibility ¼ mile and increase Circling Cat D visibility ¼ mile. Baro-VNAV NA when using Key West Intl altimeter setting.

**⚠** MISSED APPROACH: Climb to 3100 direct JANKA and hold.

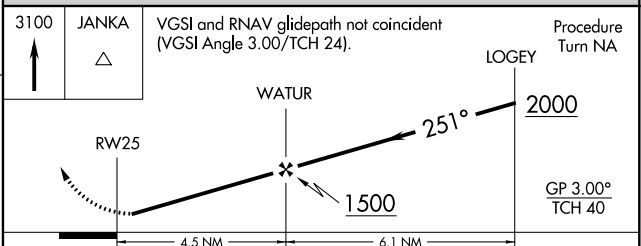
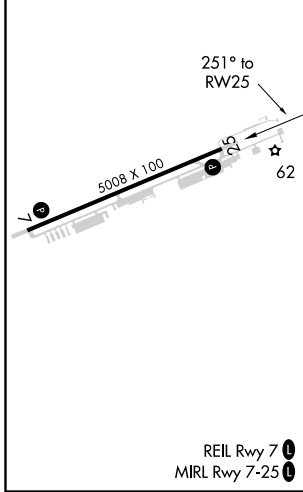
ASOS <b>135.525</b>	MIAMI CENTER <b>133.5 306.9</b>	UNICOM <b>122.975 (CTAF) 0</b>
------------------------	------------------------------------	-----------------------------------



SE-3, 25 MAR 2021 to 22 APR 2021

SE-3, 25 MAR 2021 to 22 APR 2021

ELEV 5	<b>D</b>	TDZE 5
--------	----------	--------



CATEGORY	A	B	C	D
LPV DA	315-1 310 (400-1)			
LNAV/VNAV DA	404-1½ 399 (400-1½)			
LNAV MDA	440-1 435 (500-1)	440-1¼ 435 (500-1¼)	440-1½ 435 (500-1½)	
CIRCLING	460-1 455 (500-1)	460-1½ 455 (500-1½)	580-2 575 (600-2)	