

WAAS CH <b>81999</b> <b>W35A</b>	APP CRS <b>356°</b>	Rwy Idg <b>5006</b> TDZE <b>472</b> Apt Elev <b>474</b>
--	------------------------	---

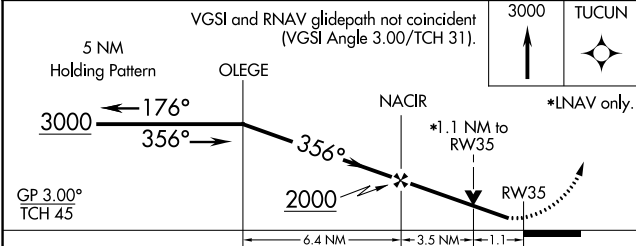
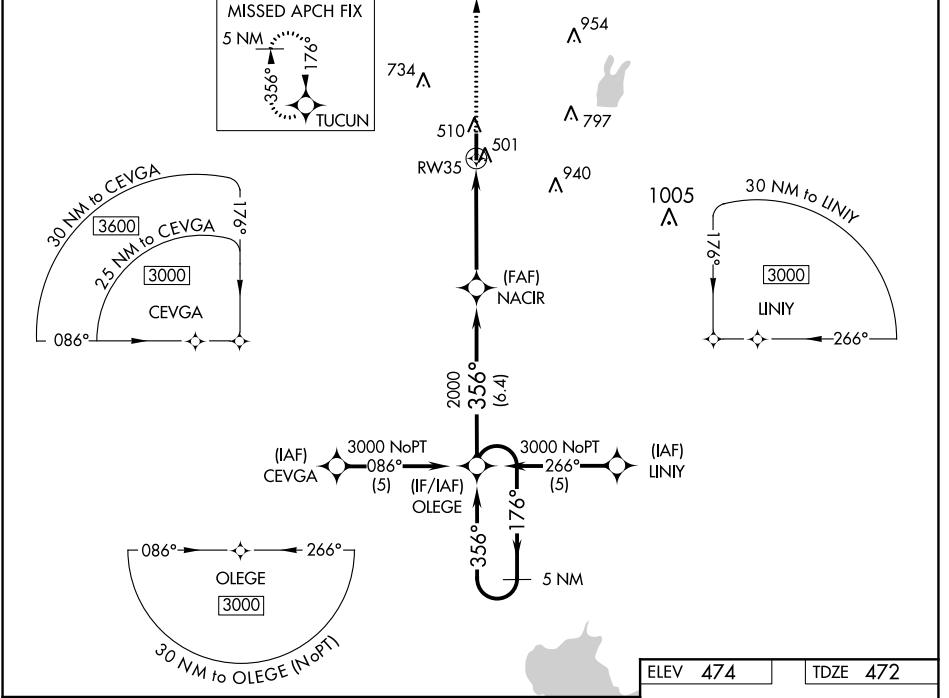
# RNAV (GPS) RWY 35

TERRELL MUNI (TRL)

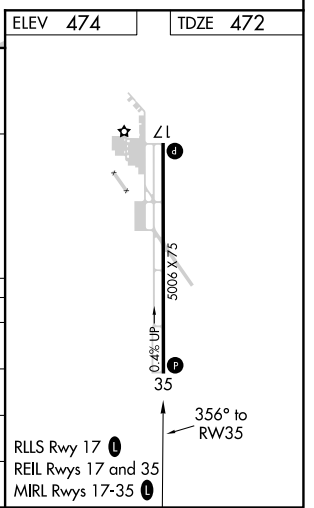
**⚠** Baro-VNAV and VDP NA when using Dallas-Love Field altimeter setting. For uncompensated Baro-VNAV systems, LNAV/VNAV NA below -7°C (20°F) or above 54°C (130°F). DME/DME RNP-0.3 NA. When local altimeter setting not received, use Dallas-Love Field altimeter setting and increase all DA 73 feet and all MDA 80 feet; increase LPV all Cats, LNAV/VNAV all Cats, LNAV Cat C and Circling Cat C visibility ¼ mile. Helicopter visibility reduction below ¾ SM NA.

**MISSED APPROACH:** Climb to 3000 direct TUCUN and hold.

ASOS <b>119.275</b>	FORT WORTH CENTER <b>132.025 360.75</b>	UNICOM <b>122.8 (CTAF) 0</b>
------------------------	--	---------------------------------



CATEGORY	A	B	C	D
LPV DA	730-7/8	258 (300-7/8)		NA
LNAV/VNAV DA	801-1 1/8	329 (400-1 1/8)		NA
LNAV MDA	820-1	348 (400-1)		NA
CIRCLING	980-1 506 (600-1)	1020-1 546 (600-1)	1020-1 1/2 546 (600-1 1/2)	NA



SC-2, 25 MAR 2021 to 22 APR 2021

SC-2, 25 MAR 2021 to 22 APR 2021