

WAAS CH <b>58235</b> <b>W02A</b>	APP CRS <b>020°</b>	Rwy Idg TDZE Apt Elev	<b>5500</b> <b>957</b> <b>969</b>
--	------------------------	-----------------------------	---

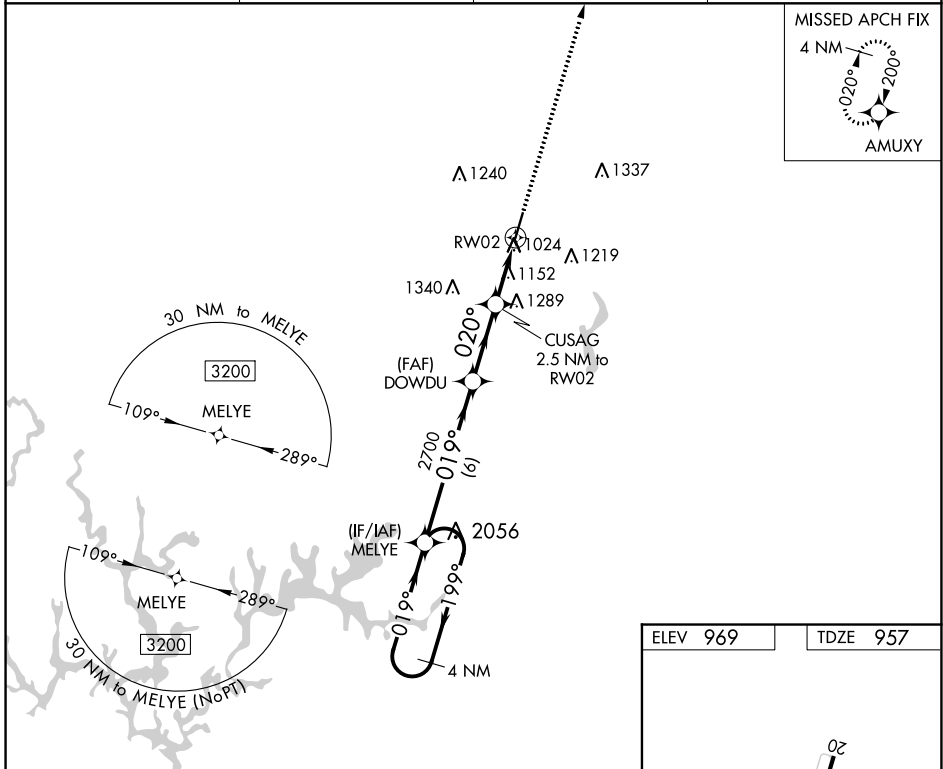
# RNAV (GPS) RWY 2

CULLMAN RGNL-FOLSOM FIELD (CMD)

**⚠** DME/DME RNP-0.3 NA. When local altimeter setting not received, use Huntsville Int-Carl T. Jones Field altimeter setting and increase all MDA 100 feet, and increase LP, LNAV Cat C and D visibility  $\frac{3}{8}$  SM, increase Circling Cat C and D visibility  $\frac{1}{4}$  SM. Rwy 2 helicopter visibility reduction below 1 SM NA. Straight-in and Circling Rwy 2 NA at night.

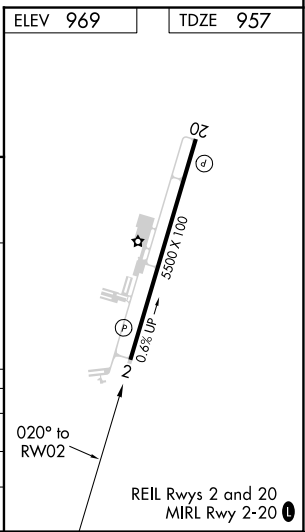
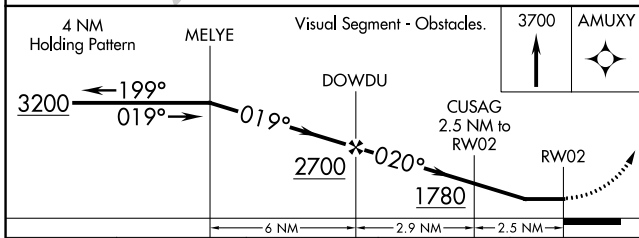
**MISSED APPROACH:**  
Climb to 3700 direct AMUXY and hold.

AWOS-3PT <b>124.175</b>	HUNTSVILLE APP CON * <b>118.05 239.0</b>	GCO <b>121.725</b>	UNICOM <b>122.8 (CTAF) 0</b>
----------------------------	---	-----------------------	---------------------------------



SE-4, 25 MAR 2021 to 22 APR 2021

SE-4, 25 MAR 2021 to 22 APR 2021



CATEGORY	A	B	C	D
LP MDA	1420-1	463 (500-1)	1420-1 $\frac{3}{8}$	463 (500-1 $\frac{3}{8}$ )
LNAV MDA	1440-1	483 (500-1)	1440-1 $\frac{3}{8}$	483 (500-1 $\frac{3}{8}$ )
<b>C</b> CIRCLING	1440-1 471 (500-1)	1500-1 531 (600-1)	1600-1 $\frac{3}{4}$ 631 (700-1 $\frac{3}{4}$ )	1640-2 $\frac{1}{4}$ 671 (700-2 $\frac{1}{4}$ )