

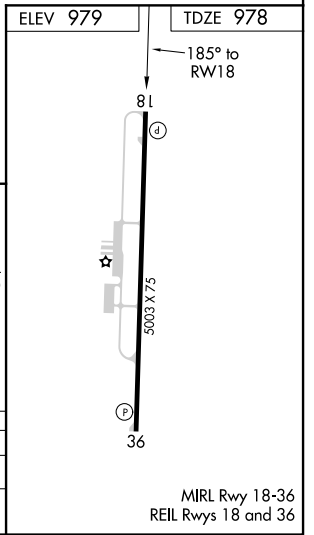
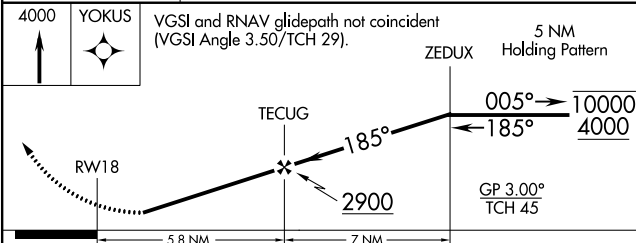
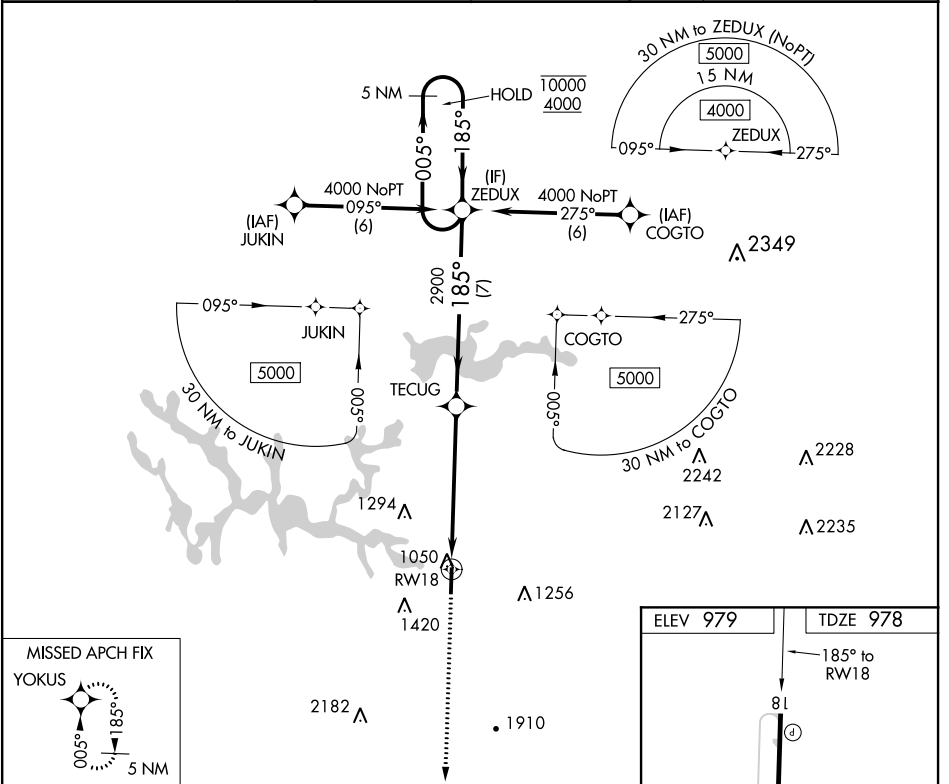
WAAS CH 42708 W18A	APP CRS 185°	Rwy Idg TDZE Apt Elev	5003 978 979
--	------------------------	-----------------------------	---

RNAV (GPS) Z RWY 18

WINCHESTER MUNI (BGF)

RNP APCH.			MISSED APPROACH: Climb to 4000 direct YOKUS and hold.
Rwy 18 helicopter visibility reduction below 3/4 SM NA. For uncompensated Baro-VNAV systems, LNAV/VNAV NA below -16°C or above 54°C.			

AWOS-3 121.675	MEMPHIS CENTER 128.15 323.125	GCO 121.725	UNICOM 122.8 (CTAF)
--------------------------	---	-----------------------	-------------------------------



CATEGORY	A	B	C	D
LPV DA		1375-1½	397 (400-1½)	
LNAV/VNAV DA		1596-2¼	618 (700-2¼)	

SE-1, 25 MAR 2021 to 22 APR 2021

SE-1, 25 MAR 2021 to 22 APR 2021