

WYLSN SEVEN DEPARTURE (RNAV)

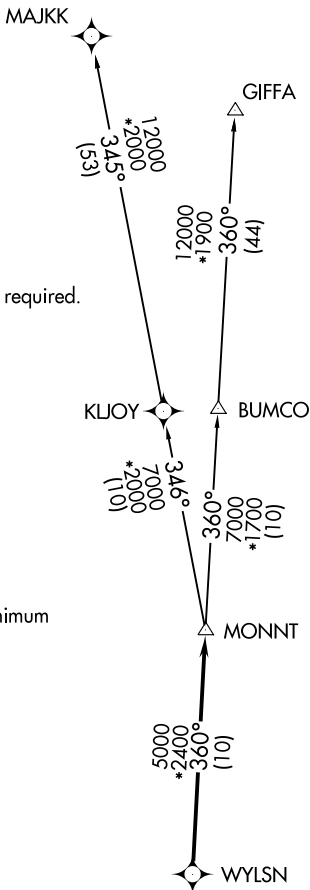
CLNC DEL
121.15
CTAF
123.05
HOUSTON DEP CON
123.8 257.7

**TOP ALTITUDE:
ASSIGNED BY ATC**

NOTE: RADAR required.
NOTE: DME/DME/IRU or GPS required.
NOTE: RNAV 1.

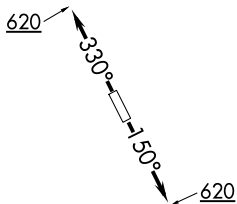
TAKEOFF MINIMUMS

Rwys 15, 33: Standard with minimum climb of 500' per NM to 620.



SC-5, 25 MAR 2021 to 22 APR 2021

SC-5, 25 MAR 2021 to 22 APR 2021



DEPARTURE ROUTE DESCRIPTION

TAKEOFF RWY 15: Climb on heading 150° to 620 for RADAR vectors to WYLSN, thence. . . .

TAKEOFF RWY 33: Climb on heading 330° to 620 for RADAR vectors to WYLSN, thence. . . .

. . . .on track 360° to MONNT, then on (transition). Maintain ATC assigned altitude. Expect filed altitude 10 minutes after departure.

GIFFA TRANSITION (WYLSN7.GIFFA)

MAJJK TRANSITION (WYLSN7.MAJKK)

NOTE: Chart not to scale.

WYLSN SEVEN DEPARTURE (RNAV)