

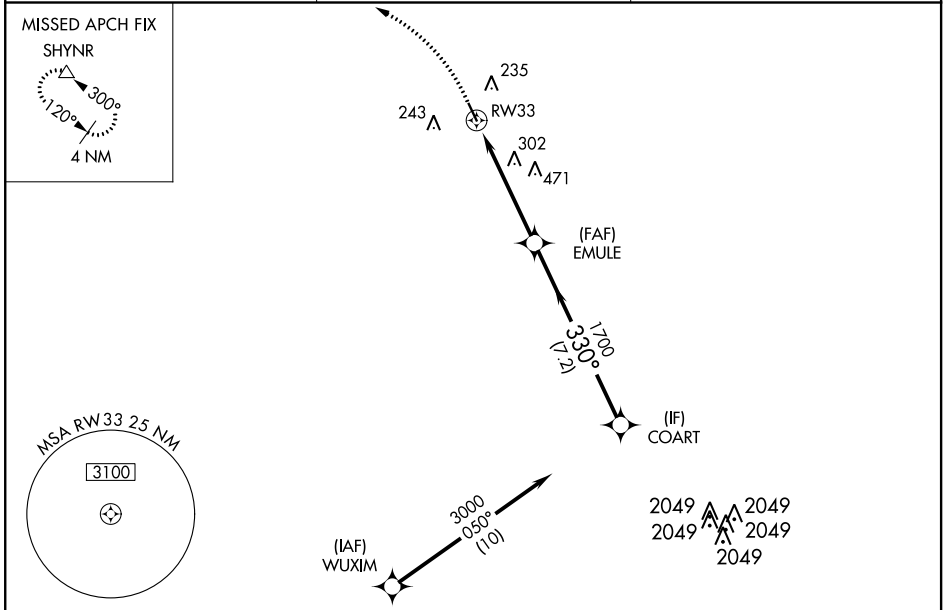
APP CRS <b>330°</b>	Rwy Idg TDZE Apt Elev	<b>3953</b> <b>111</b> <b>111</b>
------------------------	-----------------------------	---

# RNAV (GPS) RWY 33

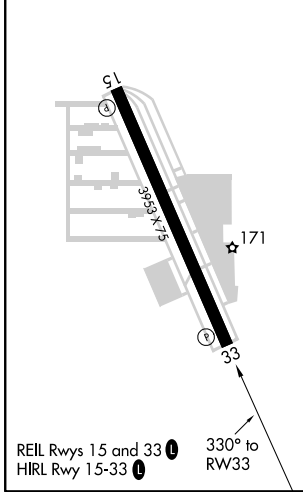
WEST HOUSTON (IWS)

RNP APCH. Rwy 33 helicopter visibility reduction below 1 SM NA. Use George Bush Intercontinental/Houston altimeter setting. Circling Rwy 15 NA at night.	MISSED APPROACH: Climbing left turn to 2000 direct SHYNR and hold.
---	--

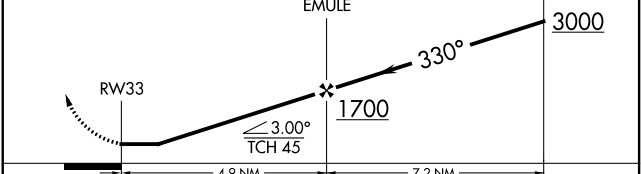
HOUSTON APP CON <b>123.8 257.7</b>	CLNC DEL <b>121.15</b>	UNICOM <b>123.05 (CTAF)</b>
---------------------------------------	---------------------------	--------------------------------



ELEV 111	TDZE 111
----------	----------



2000	SHYNR	VGSI and descent angles not coincident (VGSI Angle 3.70/TCH 44).
------	-------	--



CATEGORY	A	B	C	D
LNAV MDA	600-1	489 (500-1)	600-1 <sup>3</sup> / <sub>8</sub> 489 (500-1 <sup>3</sup> / <sub>8</sub> )	NA
CIRCLING	600-1	489 (500-1)	640-1 <sup>1</sup> / <sub>2</sub> 529 (600-1 <sup>1</sup> / <sub>2</sub> )	NA

SC-5, 25 MAR 2021 to 22 APR 2021

SC-5, 25 MAR 2021 to 22 APR 2021