

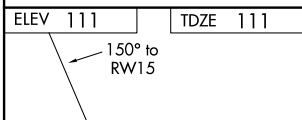
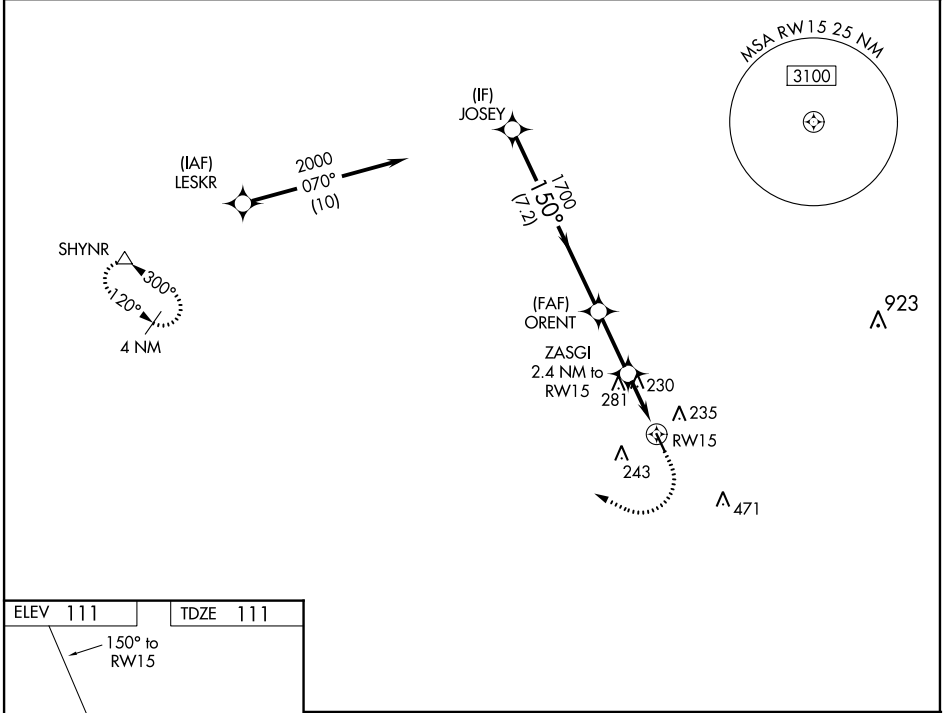
WAAS CH 40429 W15A	APP CRS 150°	Rwy Idg TDZE Apt Elev	3953 111 111
--	------------------------	-----------------------------	---

RNAV (GPS) RWY 15

WEST HOUSTON (IWS)

RNP APCH.	MISSED APPROACH: Climb to 600 then climbing right turn to 2000 direct SHYNR and hold.
Procedure NA at night. Rwy 15 helicopter visibility reduction below 1 SM NA. Use George Bush Intercontinental/Houston altimeter setting.	

HOUSTON APP CON 123.8 257.7	CLNC DEL 121.15	UNICOM 123.05 (CTAF) 0
---------------------------------------	---------------------------	----------------------------------



	VGSIs and descent angles not coincident (VGSi Angle 3.70/TCH 43).			600	2000	SHYNR
	JOSEY	ORENT	ZASGI			
	2000	1700	900			
	7.2 NM			2.5 NM	2.4 NM	
CATEGORY	A	B	C	D		
LP MDA	540-1	429 (500-1)	540-1¼ 429 (500-1¼)	NA		
LNAV MDA	580-1	469 (500-1)	580-1¾ 469 (500-1¾)	NA		
CIRCLING	600-1	489 (500-1)	640-1½ 529 (600-1½)	NA		

REIL Rwy 15 and 33
HIRL Rwy 15-33

SC-5, 25 MAR 2021 to 22 APR 2021

SC-5, 25 MAR 2021 to 22 APR 2021