

EL DORADO NINE DEPARTURE

CLNC DEL
121.15
CTAF
123.05
HOUSTON DEP CON
123.8 257.7

**TOP ALTITUDE:
ASSIGNED BY ATC**

EL DORADO
115.5 ELD
Chan 102
N33°15.37'-W92°44.64'
L-17, H-6

NOTE: RADAR required.
NOTE: For aircraft destined MEM
or filed via Q32 or J42.

LUFKIN
112.1 LFK
Chan 58

MUSIQ
N30°33.17'
W94°53.53'

DARTR
N30°24.19'
W95°00.41'

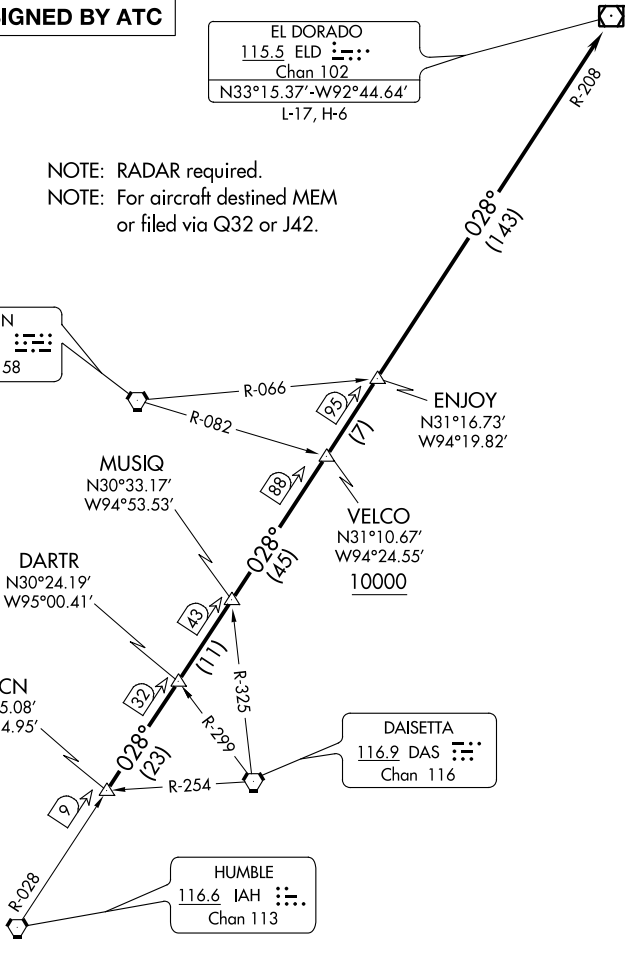
RAECN
N30°05.08'
W95°14.95'

HUMBLE
116.6 IAH
Chan 113

DAISETTA
116.9 DAS
Chan 116

VELCO
N31°10.67'
W94°24.55'
10000

ENJOY
N31°16.73'
W94°19.82'



TAKEOFF MINIMUMS
Rwys 15, 33: Standard.

NOTE: Chart not to scale.

DEPARTURE ROUTE DESCRIPTION

TAKEOFF ALL RWYS: When entering controlled airspace, climb on assigned heading for RADAR vectors to RAECN INT. Maintain ATC assigned altitude. Expect filed altitude 10 minutes after departure, thence. . . .

. . . .on IAH R-028 and the ELD R-208 to ELD VOR/DME, cross VELCO INT at or above 10000.