

LOC/DME F-LVK 110.5 Chan 42	APP CRS 255°	Rwy ldg TDZE Apt Elev	5253 400 400
---	------------------------	-----------------------------	---


ILS RWY 25R

LIVERMORE MUNI (LVK)

DME required.

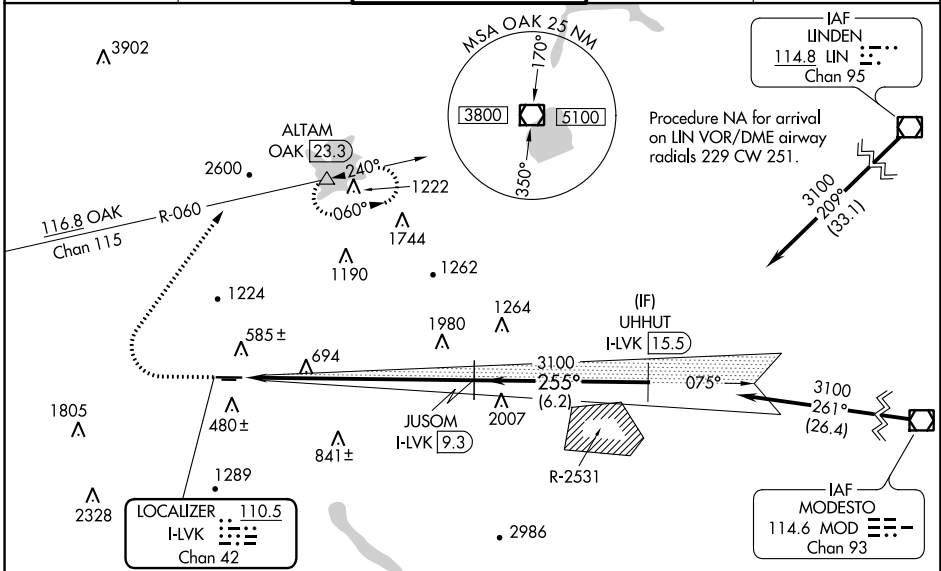
▼
▲

MALS R

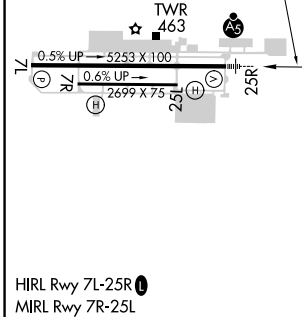
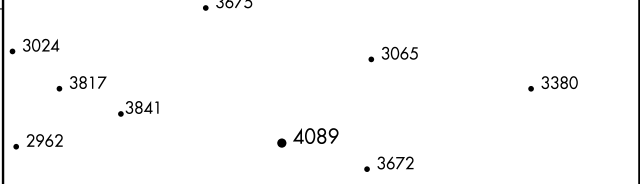
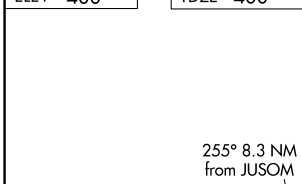


MISSED APPROACH: Climb to 1200 then climbing right turn to 5000 on heading 020° and OAK VOR/DME R-060 to ALTAM/OAK VOR/DME 23.3 DME and hold, continue climb-in-hold to 5000.
*Missed approach requires a minimum climb of 358 feet per NM to 3600, if unable to meet climb gradient, see LOC RWY 25R.

ATIS 119.65	NORCAL APP CON 123.85 278.3	LIVERMORE TOWER * 118.1(CTAF) 239.25	GND CON 121.6	UNICOM 122.95
-----------------------	---------------------------------------	--	-------------------------	-------------------------



ELEV 400	TDZE 400
----------	----------



1200	5000	OAK R-060	ALTAM	JUSOM I-LVK [9.3]	UHHUT I-LVK [15.5]
↑	hdg 020°	△			
		3100	255°	3100	
		GS 3.00°	TCH 47		
CATEGORY		A	B	C	D
S-ILS 25R		600-½		200 (200-½)	

SW-2, 25 MAR 2021 to 22 APR 2021

SW-2, 25 MAR 2021 to 22 APR 2021