

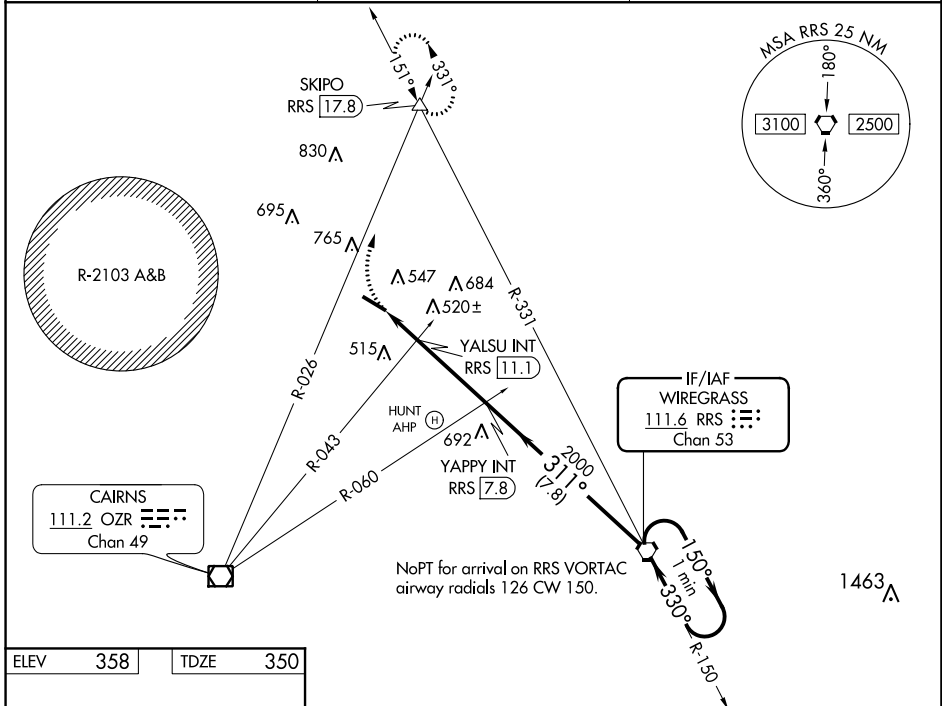
VORTAC RRS <b>111.6</b> Chan <b>53</b>	APP CRS <b>311°</b>	Rwy Idg <b>5152</b> TDZE <b>350</b> Apt Elev <b>358</b>
----------------------------------------------	------------------------	---------------------------------------------------------------

# VOR RWY 31

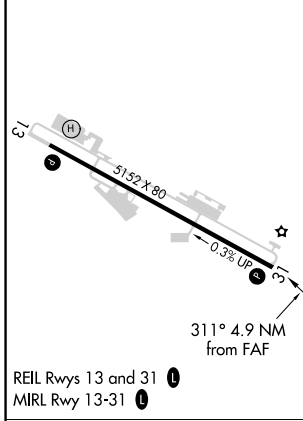
OZARK-BLACKWELL FIELD (71J)

▼ Use Dothan altimeter setting; when not received, use Cairns AAF altimeter setting. Procedure NA at night.  
 ▲ NA MISSED APPROACH: Climbing right turn to 2000 on OZR VOR/DME R-026 to SKIPO INT/RRS 17.8 DME and hold.

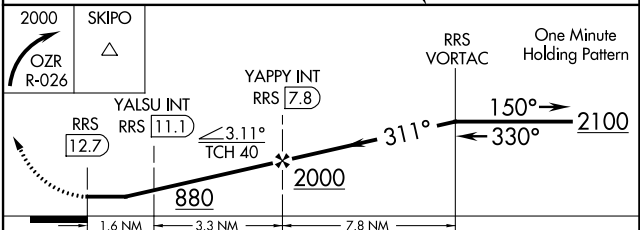
DHN ASOS <b>135.725</b>	CAIRNS APP CON ★ <b>125.4 327.125</b>	UNICOM <b>122.7 (CTAF)</b> <b>0</b>
----------------------------	------------------------------------------	----------------------------------------



ELEV	358	TDZE	350
------	-----	------	-----



FAF to MAP 4.9 NM					
Knots	60	90	120	150	180
Min:Sec	4:54	3:16	2:27	1:58	1:38



CATEGORY	A	B	C	D
S-31	880-1	530 (600-1)	880-1½ 530 (600-1½)	NA
CIRCLING	900-1	542 (600-1)	960-1¾ 602 (700-1¾)	NA
YALSU FIX MINIMUMS (DUAL VOR RECEIVERS OR DME REQUIRED)				
S-31	820-1	470 (500-1)	820-1¾ 470 (500-1¾)	NA
CIRCLING	900-1	542 (600-1)	960-1¾ 602 (700-1¾)	NA

SE-4, 25 MAR 2021 to 22 APR 2021

SE-4, 25 MAR 2021 to 22 APR 2021