

WAAS CH 62832 W31A	APP CRS 305°	Rwy Idg 5152 TDZE 350 Apt Elev 358
----------------------------------------	------------------------	---------------------------------------------------------------

RNAV (GPS) RWY 31

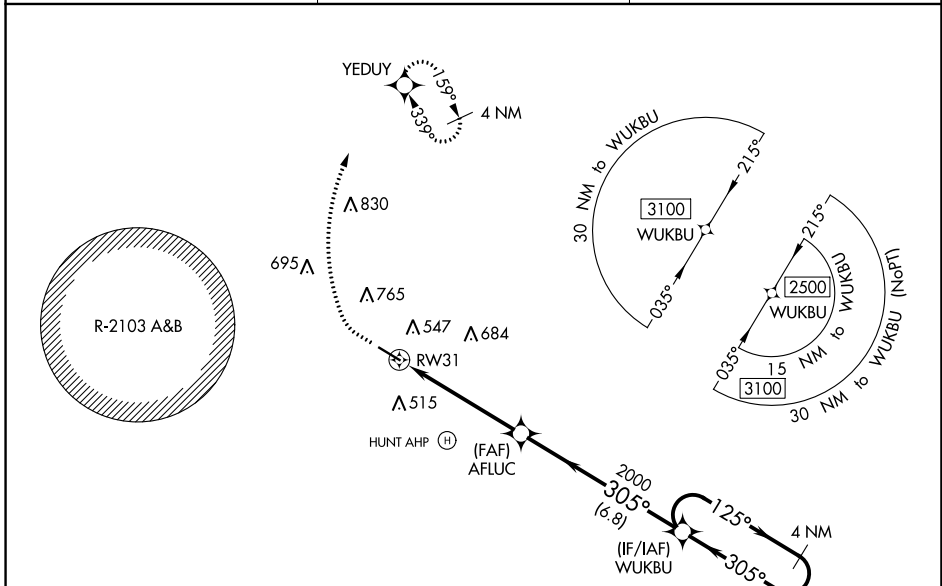
OZARK-BLACKWELL FIELD (71J)

RNP APCH.

- ▼ Baro-VNAV NA. Use Dothan altimeter setting; when not received, use Cairns AAF altimeter setting.
- ▲ NA Rwy 31 helicopter visibility reduction below 3/4 SM NA. Circling Rwy 13, 31 NA at night.

MISSED APPROACH: Climb to 900 then climbing right turn to 2000 direct YEDUY and hold.

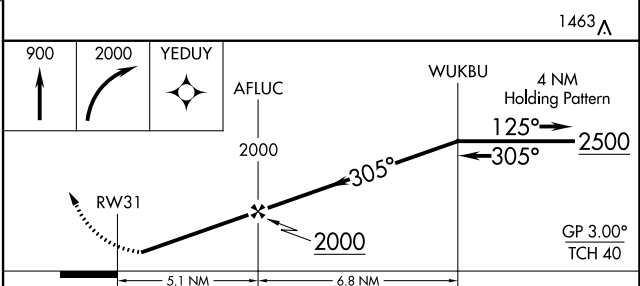
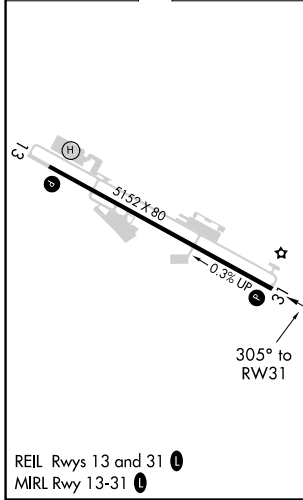
DHN ASOS 135.725	CAIRNS APP CON ★ 125.4 327.125	UNICOM 122.7 (CTAF) 0
----------------------------	------------------------------------------	---------------------------------



SE-4, 25 MAR 2021 to 22 APR 2021

SE-4, 25 MAR 2021 to 22 APR 2021

ELEV	358	TDZE	350
------	-----	------	-----



CATEGORY	A	B	C	D
LPV DA	661-1 310 (400-1)			NA
LNAV/VNAV DA	851-1 3/4 501 (500-1 3/4)			NA
LNAV MDA	860-1 510 (600-1)	860-1 3/8 510 (600-1 3/8)		NA
CIRCLING	900-1 542 (600-1)	960-1 3/4 602 (700-1 3/4)		NA