

WAAS CH 50232 W13A	APP CRS 125°	Rwy Idg TDZE Apt Elev	5152 358 358
--	------------------------	-----------------------------	---

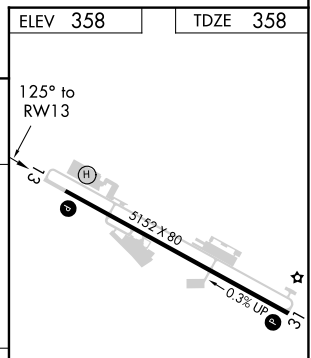
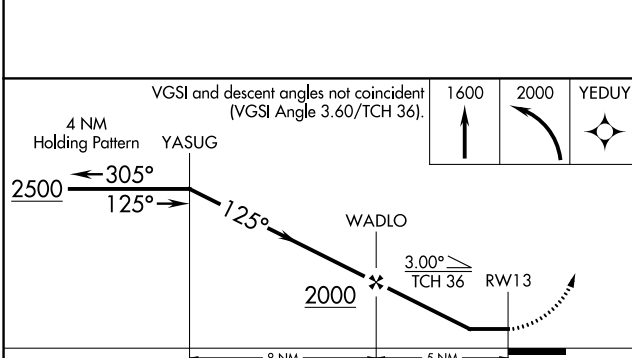
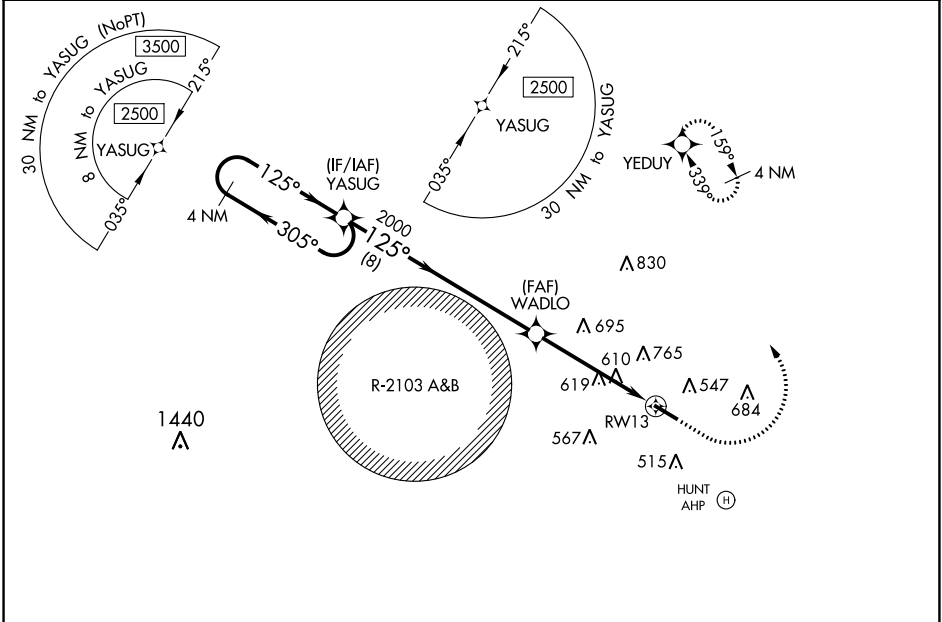
RNAV (GPS) RWY 13

OZARK-BLACKWELL FIELD (71J)

RNP APCH: Use Dothan altimeter setting; when not received, use Cairns AAF altimeter setting. Procedure NA at night.
 Rwy 13 helicopter visibility reduction below 1 SM NA.

MISSED APPROACH: Climb to 1600 then climbing left turn to 2000 direct YEDUY and hold.

DHN ASOS 135.725	CAIRNS APP CON ★ 125.4 327.125	UNICOM 122.7 (CTAF) 0
----------------------------	--	---------------------------------



CATEGORY	A	B	C	D
LP MDA	900-1	542 (600-1)	900-1 5/8 542 (600-1 5/8)	NA
LNAV MDA	960-1	602 (700-1)	960-1 3/4 602 (700-1 3/4)	NA
CIRCLING	960-1	602 (700-1)	960-1 3/4 602 (700-1 3/4)	NA

REIL Rwy 13 and 31 0
 MIRL Rwy 13-31 0

SE-4, 25 MAR 2021 to 22 APR 2021

SE-4, 25 MAR 2021 to 22 APR 2021