

WAAS CH <b>40300</b> <b>W33A</b>	APP CRS <b>330°</b>	Rwy ldg TDZE Apt Elev	<b>4578</b> <b>15</b> <b>19</b>
--	------------------------	-----------------------------	---------------------------------------

# RNAV (GPS) RWY 33

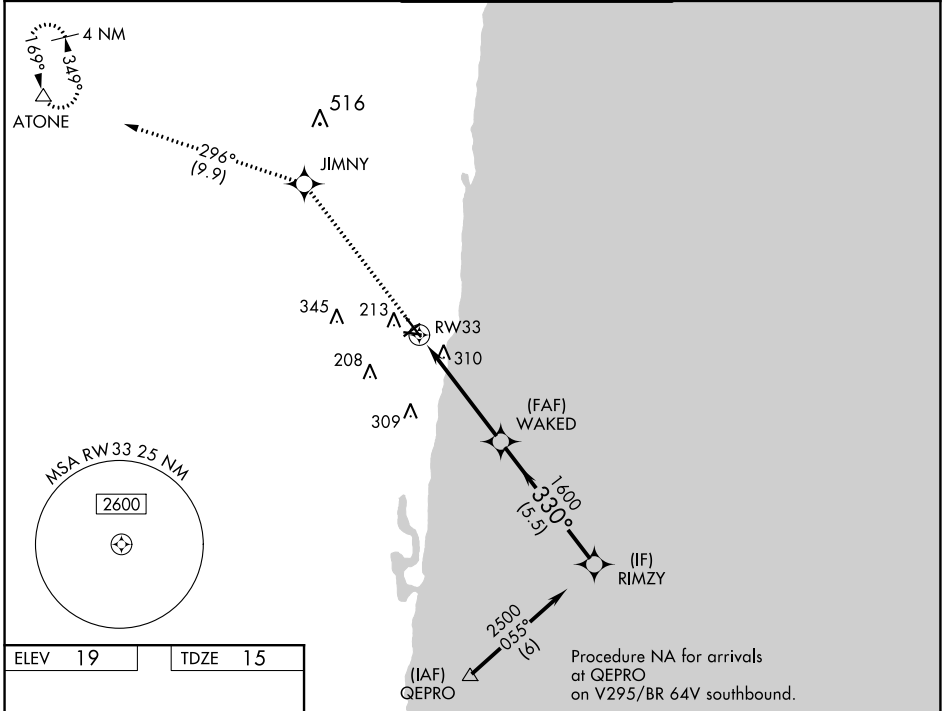
POMPANO BEACH AIRPARK (PMP)

RNP APCH.

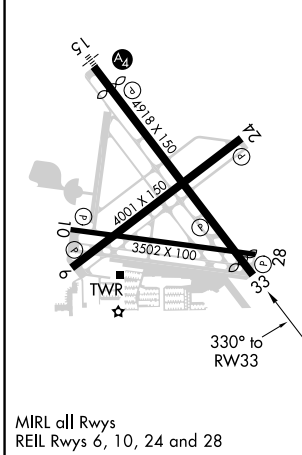
**⚠** Circling Rwy 15 NA at night. Rwy 33 helicopter visibility reduction below 3/4 SM NA.  
**⚠** For uncompensated Baro-VNAV systems, LNAV/VNAV NA below 0°C or above 54°C.  
 When local altimeter setting not received, use Fort Lauderdale Executive altimeter setting.

**MISSED APPROACH:** Climb to 2100 direct JIMNY and on track 296° to ATONE and hold.

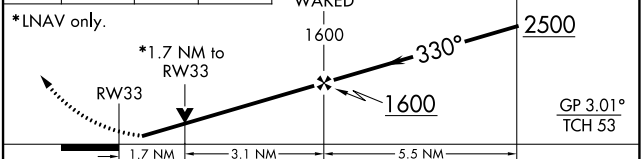
ATIS <b>120.55</b>	MIAMI APP CON <b>119.7 306.3</b>	<b>POMPANO BEACH TOWER *</b> <b>125.4 (CTAF) 0</b>	GND CON <b>121.9</b>	UNICOM <b>122.95</b>
-----------------------	-------------------------------------	---	-------------------------	-------------------------



ELEV 19	TDZE 15
---------	---------



2100	JIMNY	tr 296°	ATONE	RIMZY
------	-------	---------	-------	-------



CATEGORY	A	B	C	D
LPV DA	265-3/4	250 (300-3/4)		NA
LNAV/VNAV DA	700-2 1/2	685 (700-2 1/2)		NA
LNAV MDA	620-1	605 (700-1)		NA
<b>C</b> CIRCLING	660-1	641 (700-1)		NA

SE-3, 25 MAR 2021 to 22 APR 2021

SE-3, 25 MAR 2021 to 22 APR 2021