

WAAS CH 40318 W35A	APP CRS 354°	Rwy Idg TDZE Apt Elev	5000 648 657
--	------------------------	-----------------------------	---

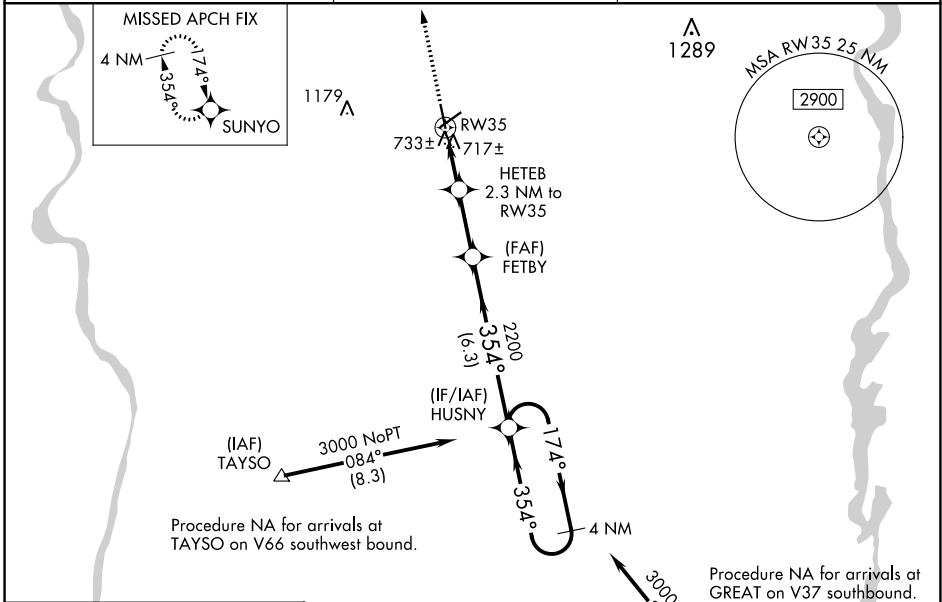
RNAV (GPS) RWY 35

CHESTER CATAWBA RGNL (DCM)

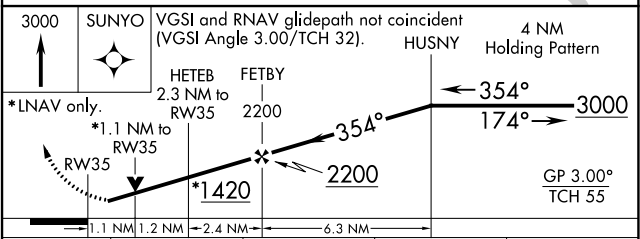
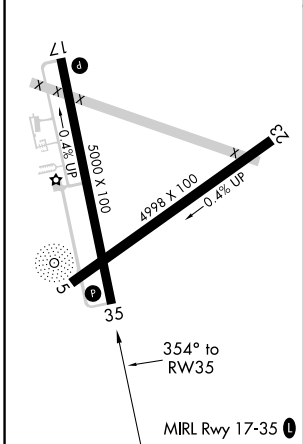
▼ Circling to Rwy 5-23 NA at night. For uncompensated Baro-VNAV systems, LNAV/VNAV NA below -16°C (4°F) or above 47°C (116°F). DME/DME RNP-0.3 NA. Visibility reduction by helicopters NA. When local altimeter setting not received, use Rock Hill altimeter setting and increase all DA 33 feet and all MDAs 40 feet; increase LPV, LNAV/VNAV all Cats and LNAV Cat C visibility ¼ mile. Baro-VNAV and VDP NA when using Rock Hill altimeter setting.

MISSED APPROACH:
Climb to 3000 direct SUNYO and hold.

AWOS-3 120.975	CHARLOTTE APP CON 120.05 307.8	UNICOM 122.7 (CTAF)
--------------------------	--	-------------------------------



ELEV 657	TDZE 648
-----------------	-----------------



CATEGORY	A	B	C	D
LPV DA	940-1 292 (300-1)			
LNAV/VNAV DA	1010-1¼ 362 (400-1¼)			
LNAV MDA	1020-1 372 (400-1)		1020-1¼ 372 (400-1¼)	
CIRCLING	1160-1 503 (600-1)		1160-1½ 503 (600-1½)	1220-2 563 (600-2)

SE-2, 25 MAR 2021 to 22 APR 2021

SE-2, 25 MAR 2021 to 22 APR 2021