

WAAS CH 82723 W18A	APP CRS 183°	Rwy Idg 5008 TDZE 930 Apt Elev 930
--	------------------------	---

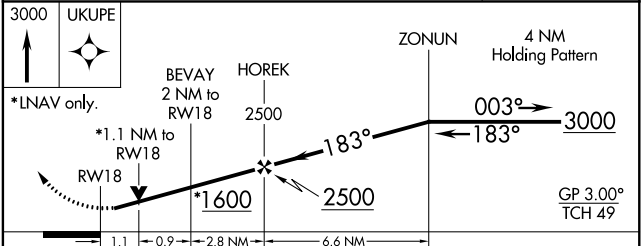
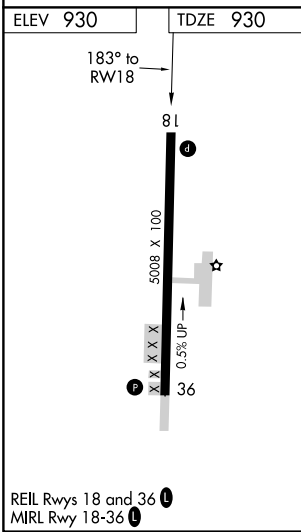
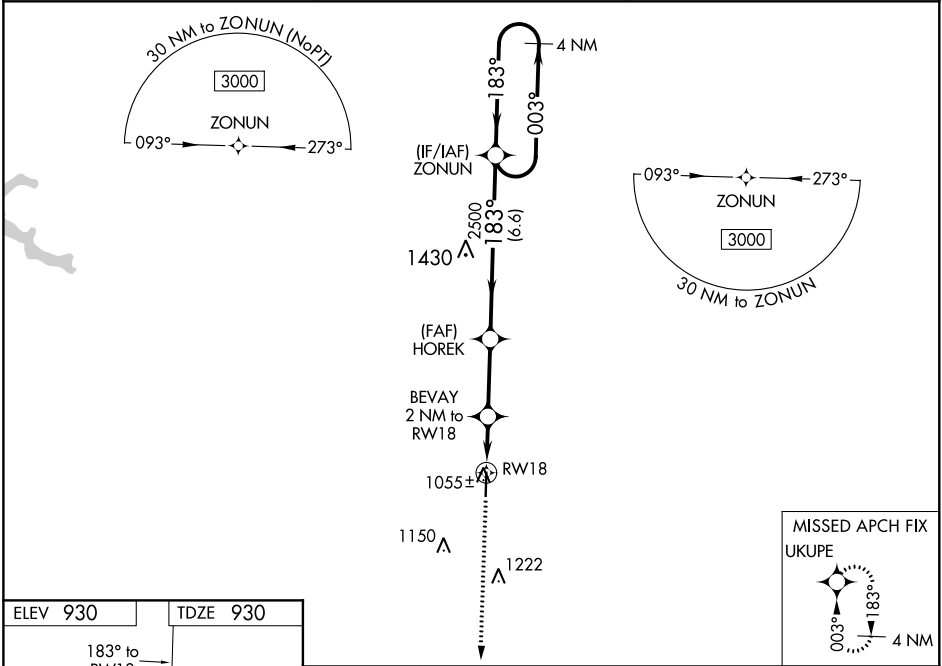
RNAV (GPS) RWY 18

POSEY FIELD (1M4)

⚠ Circling Rwy 36 NA at night. Rwy 18 helicopter visibility reduction below $\frac{3}{4}$ SM NA. When local altimeter setting not received, use Muscle Shoals altimeter setting; Increase LPV DA to 1298 feet, and LNAV/VNAV DA to 1354 feet and LNAV/VNAV visibility $\frac{1}{4}$ SM; increase all MDAs 120 feet and visibility LNAV Cats C and D $\frac{1}{4}$ SM; increase Circling Cat C visibility $\frac{1}{2}$ SM and Cat D $\frac{1}{4}$ SM. Baro-VNAV NA when using Muscle Shoals altimeter setting. For uncompensated Baro-VNAV systems, LNAV/VNAV NA below -16°C (4°F) or above 54°C (130°F). DME/DME RNP-0.3 NA. VDP NA with Muscle Shoals altimeter setting.

MISSED APPROACH:
Climb to 3000 direct UKUPE and hold.

AWOS-3PT 119.525	MEMPHIS CENTER 120.8 307.0	UNICOM 122.8 (CTAF) 0
----------------------------	--------------------------------------	---------------------------------



CATEGORY	A	B	C	D
LPV DA		1180-1	250 (300-1)	
LNAV/VNAV DA		1236-1	306 (400-1)	
LNAV MDA	1320-1	390 (400-1)	1320-1½	390 (400-1½)
CIRCLING	1380-1 450 (500-1)	1400-1 470 (500-1)	1520-1½ 590 (600-1½)	1540-2 610 (700-2)

SE-4, 25 MAR 2021 to 22 APR 2021

SE-4, 25 MAR 2021 to 22 APR 2021