

APP CRS	Rwy Idg	<b>5000</b>
<b>095°</b>	TDZE	<b>877</b>
	Apt Elev	<b>882</b>

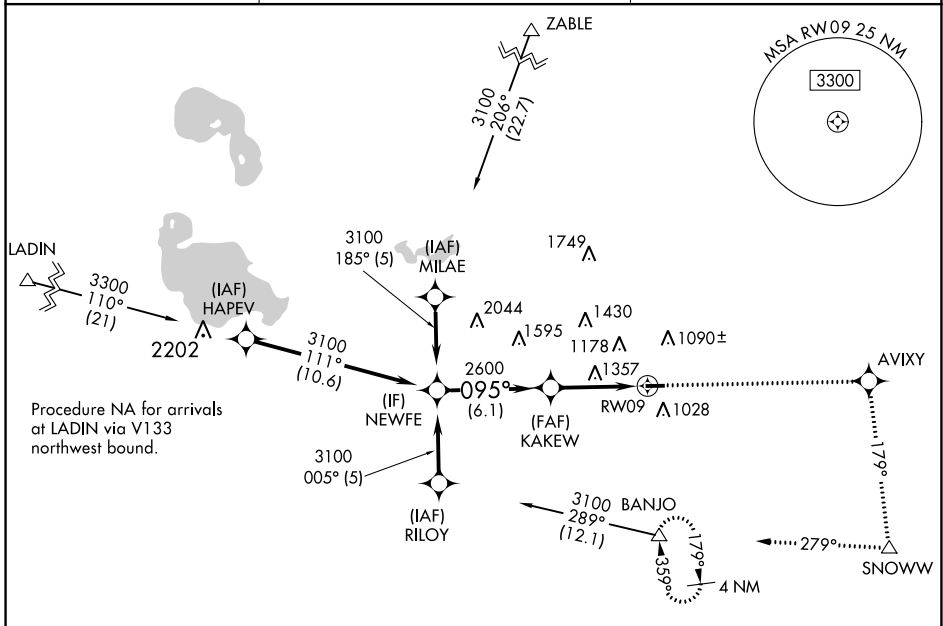
# RNAV (GPS) RWY 9

WEST BRANCH COMMUNITY (Y31)

**⚠** DME/DME RNP-0.3 NA. Helicopter visibility reduction below 1 SM NA. When local altimeter setting not received, use MBS Intl altimeter setting and increase all MDA 140 feet, increase LNAV Cat A visibility ¼ mile and Cat C/D ½ mile, increase Circling Cat A visibility ¼ mile and Cat C/D ½ mile. Night landing: Rwy 9 NA.

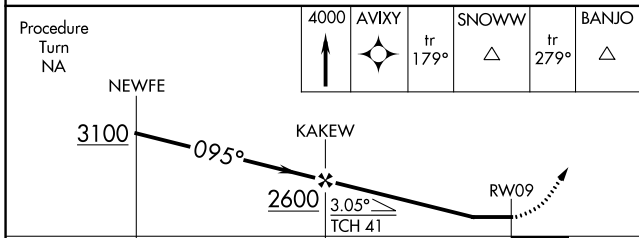
**⚠** MISSED APPROACH: Climb to 4000 direct AVIXY and via track 179° to SNOWW and via track 279° to BANJO and hold.

AWOS-3P <b>119.575</b>	MINNEAPOLIS CENTER <b>125.475 269.45</b>	UNICOM <b>122.8 (CTAF)</b>
---------------------------	---	-------------------------------



ELEV 882	TDZE 877
----------	----------

Procedure Turn NA	4000	AVIXY	SNOWW	BANJO
	↑	⬤	tr 179°	tr 279°



REIL Rwy 9 and 27  
MIRL Rwy 9-27

CATEGORY	A	B	C	D
LNAV MDA	1660-1 783 (800-1)	1660-1¼ 783 (800-1¼)	1660-2¼ 783 (800-2¼)	1660-2½ 783 (800-2½)
CIRCLING	1660-1 778 (800-1)	1660-1¼ 778 (800-1¼)	1660-2¼ 778 (800-2¼)	1660-2½ 778 (800-2½)

EC-1, 25 MAR 2021 to 22 APR 2021

EC-1, 25 MAR 2021 to 22 APR 2021