

WAAS CH <b>93810</b> <b>W23A</b>	APP CRS <b>225°</b>	Rwy Idg TDZE Apt Elev	<b>4800</b> <b>37</b> <b>37</b>
--	------------------------	-----------------------------	---------------------------------------

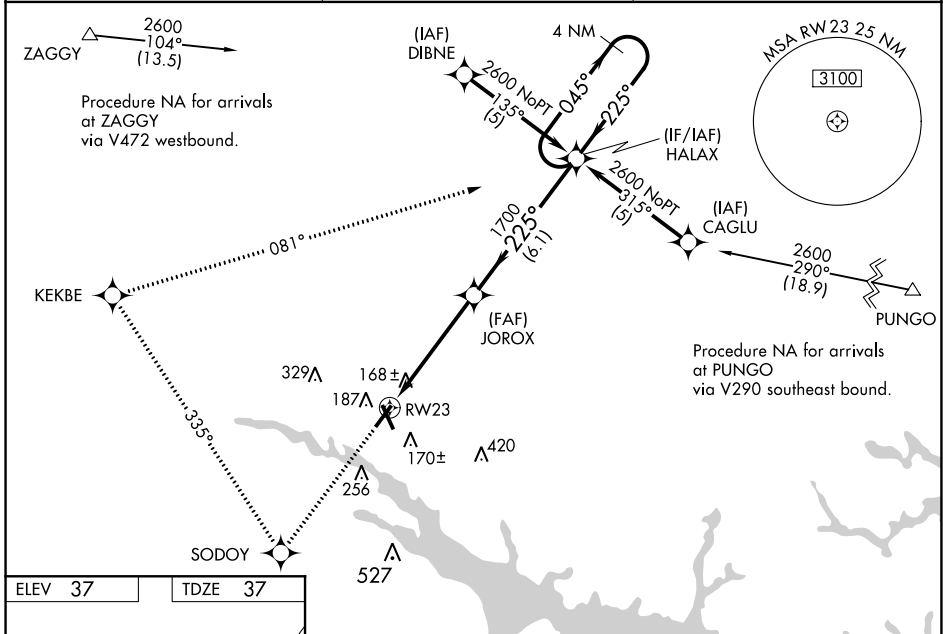
# RNAV (GPS) RWY 23

WASHINGTON-WARREN (OCW)

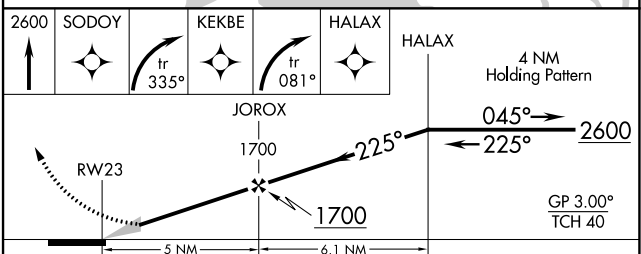
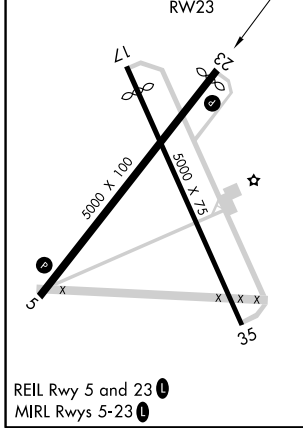
Baro-VNAV NA when using Greenville altimeter setting.  
 For uncompensated Baro-VNAV systems, LNAV/VNAV NA below -15° C (5° F) or above 48° C (118° F). DME/DME RNP-0.3 NA.  
 When local altimeter setting not received, use Greenville altimeter setting and increase LPV DA to 477, LNAV/VNAV DA to 514, and all MDA 60 feet; increase LNAV/VNAV all Cats, and LNAV Cats C and D visibility ¼ mile. Night Landing: Rwy 17 NA.

MISSED APPROACH: Climb to 2600 direct SODOY and right turn via 335° track to KEKBE and right turn via 081° track to HALAX and hold.

AWOS-3 <b>120.175</b>	CHERRY POINT APP CON <b>119.35 377.175</b>	UNICOM <b>122.7 (CTAF) 0</b>
--------------------------	---	---------------------------------



ELEV 37	TDZE 37
---------	---------



CATEGORY	A	B	C	D
LPV DA		436-1½	399 (400-1½)	
LNAV/VNAV DA		473-1½	436 (500-1½)	
LNAV MDA		420-1	383 (400-1)	420-1¼ 383 (400-1¼)
CIRCLING	540-1	503 (600-1)	540-1½ 503 (600-1½)	620-2 583 (600-2)

SE-2, 25 MAR 2021 to 22 APR 2021

SE-2, 25 MAR 2021 to 22 APR 2021