

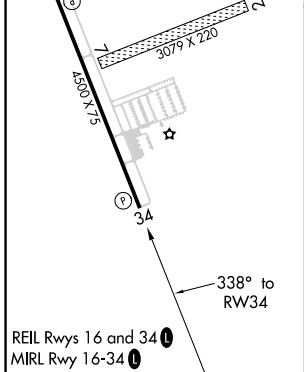
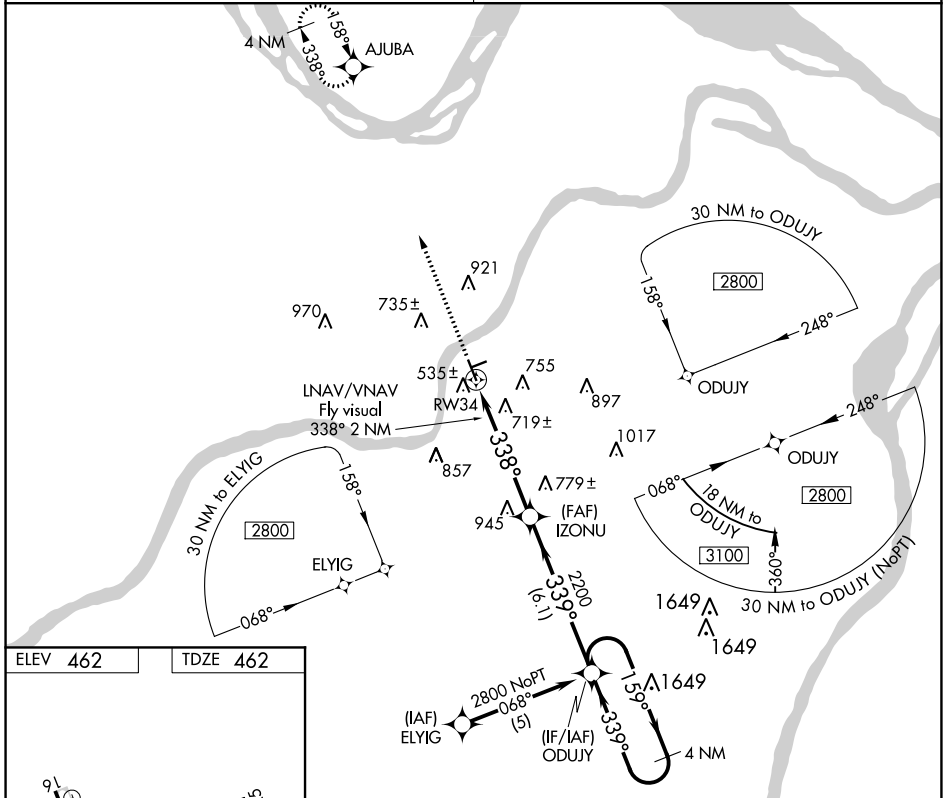
WAAS CH <b>93905</b> <b>W34A</b>	APP CRS <b>338°</b>	Rwy Idg TDZE <b>462</b> Apt Elev <b>462</b>	<b>4500</b> <b>462</b> <b>462</b>
--	------------------------	---	---

# RNAV (GPS) RWY 34

CREVE COEUR (1H0)

RNP APCH.	MISSED APPROACH: Climb to 2700 direct AJUBA and hold.
<p>▼ Use St Louis Lambert Intl altimeter setting. Baro-VNAV NA. Circling Rwy 16 NA at night.</p> <p>▲ NA Circling NA to Rwy 7 and 25. Rwy 34 helicopter visibility reduction below 3/4 SM NA.</p>	

ST. LOUIS APP CON <b>126.5 254.3</b>	UNICOM <b>122.8 (CTAF)</b>
---	-------------------------------



2700	AJUBA	VGSI and RNAV glidepath not coincident. (VGSI Angle 3.00/TCH 43).	4 NM
↑	✧		Holding Pattern
	RW34		ODUJY
LNNAV/VNAV Fly visual 338° 2 NM	IZONU	2200	2800
	5.3 NM	6.1 NM	GP 3.00° TCH 30
CATEGORY	A	B	C
LPV DA	809-1¼	347 (400-1¼)	NA
LNNAV/VNAV DA	1131-2	669 (700-2)	NA
LNNAV MDA	1080-1	618 (700-1)	NA
CIRCLING	1080-1	618 (700-1)	NA

NC-3, 25 MAR 2021 to 22 APR 2021

NC-3, 25 MAR 2021 to 22 APR 2021