

APP CRS <b>329°</b>	Rwy Idg TDZE Apt Elev	<b>4004</b> <b>811</b> <b>811</b>
------------------------	-----------------------------	---

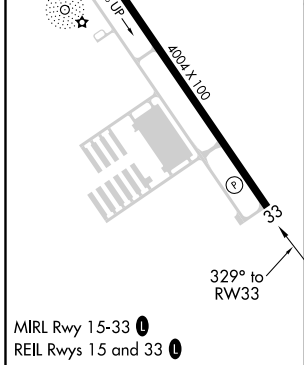
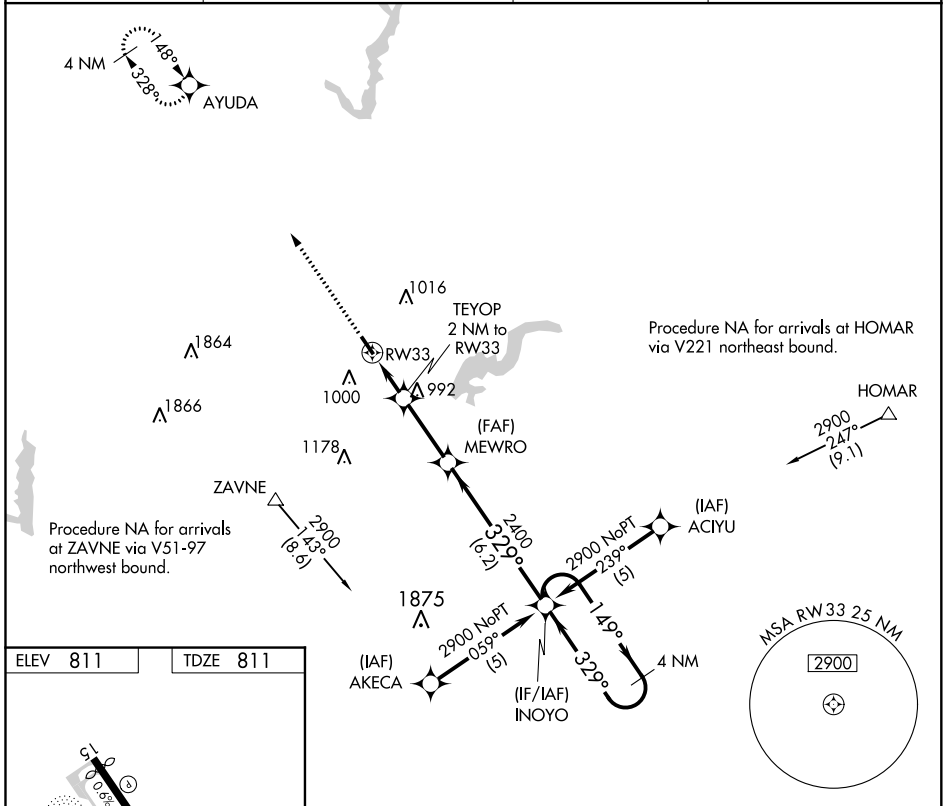
# RNAV (GPS) RWY 33

INDIANAPOLIS METROPOLITAN (UMP)

**▽** DME/DME RNP-0.3 NA. When local altimeter setting not received, use Indianapolis Intl altimeter setting and increase all MDA 60 feet and LNAV Cat C visibility ¼ mile. VDP NA when using Indianapolis Intl altimeter setting. Rwy 33 helicopter visibility reduction below ¾ SM NA.

**△** NA MISSED APPROACH: Climb to 2500 direct AYUDA and hold.

AWOS-3 <b>119.375</b>	INDIANAPOLIS APP CON <b>127.15 317.8</b>	CLNC DEL <b>121.625</b>	UNICOM <b>123.0 (CTAF) 0</b>
--------------------------	---	----------------------------	---------------------------------



2500	AYUDA	VGSIs and descent angles not coincident (VGSi Angle 3.50/TCH 27).		4 NM Holding Pattern
↑	◆	TEYOP 2 NM to RWY 33	MEWRO	INOYO
		RWY 33	1480	2400
		1.1 NM to RWY 33	2.8 NM	6.2 NM
		329°	149°	329°
		≤3.04° TCH 40		
CATEGORY	A	B	C	D
LNAV MDA	1260-1	449 (500-1)	1260-1¼ 449 (500-1¼)	NA
<b>C</b> CIRCLING	1320-1 509 (600-1)	1340-1 529 (600-1)	1340-1½ 529 (600-1½)	NA

EC-2, 25 MAR 2021 to 22 APR 2021

EC-2, 25 MAR 2021 to 22 APR 2021